



FAIRBOOK

JULY 28 - AUG 3

 13801 Cascade Road SE
Lowell, MI 49331

 www.kcyf.org

 616-897-6050

 exhibition@kcyf.org



Anderson Midways is excited to be coming to Kent County Fair, hoping to continue the excitement and make it a tradition. We have been in existence since 2018, but we have been in the carnival business for over 56 years. Anderson Midways has provided a full lineup of rides, games, and food throughout the state of Michigan. This makes for a complete day of fun at the fair. Our number one priority is safety, along with making memories, smiles, and just plain having fun. Can't wait to see all of you at the fair.

Peggy Anderson
Anderson Midways LLC



Kent County Youth Fair Premier Partners



KING MILLING COMPANY





GRETCHEN WHITMER
GOVERNOR

STATE OF MICHIGAN
OFFICE OF THE GOVERNOR
LANSING

GARLIN GILCHRIST II
LT. GOVERNOR

July 1, 2025

Dear Friends,

It's that time of the year again, Michigan—time to grab your family and friends and enjoy a Michigan county fair. From the expansive livestock barns of the Allegan County Fair to the demolition derby at the Armada Fair, Michigan's county fairs are full of educational opportunities and entertainment for the whole family.

There's something truly special about our communities coming together each year for their county fairs and celebrating what makes Michigan such a great place to live—our vibrant communities, rich agricultural heritage, and hardworking families. Whether you're enjoying local foods, cheering on the next generation of 4-H stars and future leaders of Michigan's agricultural industry, or just soaking in the excitement, I have no doubt that you will have a great time at your local county fair.

As your Governor, I am proud of the hard work and passion that goes into the exhibits and projects showcased at our county fairs. Whether you are a sponsor, exhibitor, or fairgoer, thank you for supporting your community and I hope you enjoy one of Michigan's many county fairs this summer!

Sincerely,

A handwritten signature in blue ink that reads "Gretchen Whitmer".

Gretchen Whitmer
Governor of Michigan



GRETCHEN WHITMER
GOVERNOR

STATE OF MICHIGAN
DEPARTMENT OF AGRICULTURE
AND RURAL DEVELOPMENT

DR. TIM BORING
DIRECTOR

Dear Friends,

On behalf of Michigan's fair industry, welcome to the 2025 county fair season!

Millions of people attend Michigan's county fairs each year, enjoying the sights, sounds, and activities that have become an annual tradition across the state.

Michigan's county fairs are cornerstones of social and cultural community identity. These annual events bring people together and maintain essential connections to rural traditions at a time when people are increasingly disconnected from agriculture and food production. Our state's 85 local, county, and state fairs provide safe, family-friendly entertainment and celebrate our important agricultural heritage.

County fairs also support nearly 50,000 Michigan youth who participate in livestock and community art exhibitions each year. These youth activities are meaningful educational and professional development opportunities and build lifelong connections with agriculture. The support provided by local businesses and families also provides meaningful resources for continuing education.

Whether you are here as a sponsor, exhibitor, or fairgoer, many family memories await you. I wish you great adventures during the 2025 fair season.

Sincerely,

A handwritten signature in black ink that reads "Tim Boring".

Dr. Tim Boring
Director

Kent County Youth Fair

July 28th - Aug. 2nd 2025

Lowell, MI

Table of Contents

KCYAA Board of Directors Contact Information and Bylaws	4
KCYF Exhibition Committee Contact Information and Committee Policies	7
Exhibitor Information	

Code of Conduct	7	General Livestock Exhibitor Rules	17
General Exhibitor Rules	9	Market Livestock Exhibitor Rules	18
Entry Fees	9	Livestock Auction	18
Dress Code	12	Fair Entry Instructions	19
Early Release and Release Times	12	Showmanship Sweepstakes	21
Explorer Exhibitor Rules	13	Royal Court Requirements	22
Special Needs Exhibitor	14	Membership	22
Still Exhibit Exhibitor Rules	14	Camping	22
Exhibit Building Set-up Housekeeping & Security	15	Parking	24
Still Exhibit Judging	15	Golf Cart/ATV	24
Still Exhibit Auction	16	Add - A - Bid	24

Departments

1	Membership, Camping, Parking, Golf Cart/ATV Registration, Add-A-Bid class	22
2A	Youth Dairy	24
2B	Youth Dairy Market	26
4	Youth Beef	28
6	Youth Sheep	31
8	Youth Goats/Market Goats	33
10	Youth Swine	36
12	Youth Poultry	38
14	Youth Rabbits	41
14	Youth Cavies	44
16	Youth Horse	46
22	Youth Dog Care & Training	48

60	Youth Performing Arts	51
62	Youth Needlework (sewing, knitting, crocheting, modeling)	57
64	Youth Creative Literary Arts	59
65	Youth Culinary Arts (baking, food preservation & preparation, cookie & cake decorating, etc.)	60
66	Youth Youth Painting and Drawing	62
67	Youth Folk Arts and Crafts (folk patterns & cultural exhibits)	63
68	Youth Heritage	67
69	Youth Photography (photography & videography)	68
70	Youth Agriculture (animal science, crop science, agricultural exhibits)	70
71	Youth Floriculture (flowers, indoor plants, arrangement)	71
72	Youth Horticulture (fruits and vegetables)	72
73	Youth Science and Natural Resources	74
74	Youth Woodworking, Education and Business (industrial arts, business, computer science)	76
75	Youth Tractor Driving	79
76	Youth Organizations (club booths and projects)	79
Yearly Calendar Dates		81
Fair Week Schedule		83
Royal Court		Back Pages

Kent County Youth Fair

Mailing Address: P.O. Box 288, Lowell, MI 49331

Physical Address: 13801 Cascade Rd SE, Lowell, MI 49331

616-897-6050 www.kcyf.org

Executive Director - office@kcyf.org

Alexandria Johnston 616-794-4030

Fair Exhibition Manager - exhibition@kcyf.org

Mary Crosby 616-292-9006

Kent County Youth Agricultural Association Board of Directors

President	Bill Zaske	4480 Quiggle Ave., Ada, 49301	616-260-4628
Vice President	Moss McCauley	4825 Lincoln Lake, Lowell, 49331	616-446-2670
Secretary	Kylie VanHouten	14551 Tyrone Ave., Kent City, 49330	616-430-4036
Treasurer	Kendra Diekevers	5219 Bancroft, Alto, 49302	616-272-1675

Directors Term Expires Nov. 2025

Matt Weldon	7107 Shalimar Dr. NE, Comstock Park, 49321	616-813-2281
Bill Zaske	4480 Quiggle Ave., Ada, 49301	616-260-4628
Keegan Mebert	11901 Foreman, Lowell, 49331	616-307-5775
Kylie VanHouten	14551 Tyrone Ave., Kent City, 49330	616-430-4036

Term Expires Nov. 2026

Corey Dahms	2811 Clarksville Road, Portland, 48875	517-719-3947
Kendra Diekevers	5219 Bancroft, Alto, 49302	616-272-1675
Duane Watson	2770 20 Mile Road, Kent City, 49330	616-690-2725
Moss McCauley	4825 Lincoln Lake, Lowell, 49331	616-446-2670

Term Expires Nov. 2027

Martin Canfield	14188 76th St. Clarksville, 48815	616-291-2189
Zac Kruger	4343 Jackson Rd. Saranac, 48881	616-292-7379
Justin Perry	9425 Greenville Rd. Greenville, 48838	616-433-5341
Bryan Snoeyink	6875 Gould Rd. Saranac, 4888	616-818-5331

Kent County Youth Agricultural Association By-Laws

Article 1: This organization shall be known as the “Kent County Youth Agricultural Association” (KCYAA).

Article 2: The KCYAA is dedicated to providing an equal opportunity learning environment with a focus on agriculture and the personal growth of all youth.

Article 3: Membership of the KCYAA is open to all individuals 18 years of age or older as of the annual meeting date. The membership dues are twenty (20) dollars annually and must be received annually by October 1st. Membership includes eligibility to vote at the annual meeting, discounts on rentals, and a complimentary parking pass for the week of fair during the current membership year. Membership dates are November 1 to October 31.

Article 4: The KCYAA Board of Directors (Board) will consist of twelve senior directors.

1. Senior directors are to be elected for 3-year terms with no limit on the number of consecutive terms.
2. Four missed board meetings during the fiscal year, November 1 to October 31, will be considered a resignation of a director. Seats vacated mid-term will, at the Board's discretion, be filled by appointment at a regular Board meeting. Vacancies not filled will be left vacant until the next annual meeting.
3. Officer positions include President, Vice President, Secretary and Treasurer. Officers will be elected at the first regular board meeting following the annual meeting. These positions are one-year terms with no term limits with the following responsibilities:
 - a. President: the president will conduct the board meetings according to Robert's Rules of Order, represent the association as directed by the Board and sign documents as directed by the Board.
 - b. Vice President: the vice president will assume the presidential duties in the absence of the president, organize the standing committee structure and become president if the president leaves office.
 - c. Secretary: the secretary will keep the minutes of board meetings and the annual meeting, correspond with other organizations as directed by the Board and prepare reports as needed by the association.
 - d. Treasurer: the treasurer will keep accurate financial records of income and expenses, present an annual budget for the fiscal year beginning November 1st, assist with submitting reports to government agencies and ensure that all checks are signed by two Board approved persons relevant to respective accounts.
4. A Board Director may participate in a Board Meeting by conference telephone or any similar communications equipment through which all persons participating in the meeting can hear each other. Participation in a meeting pursuant to this section constitutes presence in person at the meeting.

Article 5: Regular Board meetings are held the second Wednesday of every month. The meeting time will be established by the Board at the first official Board meeting of the fiscal year; however the Board can adjust as needed with appropriate notice and approval. The annual meeting is held on the first Wednesday of November of each fiscal year. Special meetings may be called by a majority of the executive committee with at least 5 days prior notice given to the Board. Majority of the Board at any meeting shall constitute a quorum.

1. A meeting may be changed or canceled by approval of the Executive Committee.

Article 6: The Executive Committee consists of the President, Vice President, Secretary and Treasurer. This committee is delegated the authority to act for the board on emergency matters, or recurring matters, that must be settled before the next regular board meeting. The Executive Committee reports to the board at its next meeting where recommendations are reviewed. Executive Board meetings are set by the committee.

Article 7: Standing committees are comprised of association members and volunteers who are in charge of carrying out the duties of each respective committee.

For the operation of the Kent County Youth Fair (KCYF), the following standing committees are established:

Kent County Youth Fair Exhibition Committee

Responsible for creation and execution of guidelines, policies, and decisions pertaining to KCYF exhibitors and their families. This committee is comprised of a chair and vice chair appointed by the KCYAA board, two KCYAA board

members (at least one being an KCYAA Executive Board Member), the department superintendents, auction chairperson, and the exhibition manager who serves as an ex-officio member

Kent County Youth Fair Facilities & Revenue Committee

Establishes and monitors the fiscal well-being of the KCYF and coordinates the use of the campus and facilities during the fair. This committee is comprised of the executive director (who serves as chair), two KCYAA board members, and sub-committee chairs (included but not limited to: parking, safety, camping, entertainment, partnerships and publicity).

Kent County Youth Fair Junior Directors Committee

The purpose of this committee is to give youth exhibitors the opportunity to develop leadership skills and assist with immediate functions of the fair, including any special projects to be determined by the Junior Directors Committee. The KCYAA Board of Directors will appoint one KCYAA board member and one other adult to serve as co-advisors of this committee. Membership of the committee is comprised of individuals between the ages 16 and 19 years of age as of January 1 for the year in which their term begins. The committee shall have a minimum of four members not to exceed ten members, and members shall serve a minimum of two years. This committee is empowered to elect their officers, determine their meeting schedule, and define project scope. The Junior Directors committee will share their activity reports regularly to the KCYAA board.

Article 8: The board meetings of the KCYAA are to be conducted according to the most recent edition of Roberts Rules of Order.

Article 9: By-laws may be amended at the annual meeting with at least 30 days' notice to be given to the membership outlining the proposed amendments. A two-thirds majority vote of membership in attendance at the annual meeting is necessary for amendments to pass.

Article 10: A nominating committee of at least three persons will seek board candidates and conduct the election at the annual meeting using secret ballots. Tellers will be selected from the general membership.

Article 11: In the event that the KCYAA is dissolved, all real estate and assets will revert to the Lowell Area Community Foundation.

Amended 11/6/2024

Kent County Youth Fair Exhibition Committee

Kent County Youth Fair Exhibition Committee - KCYAA By-laws Article 7

Responsible for creation and execution of guidelines, policies, and decisions pertaining to KCYF exhibitors and their families. This committee is comprised of a chair and vice chair appointed by the KCYAA board, two KCYAA board members (at least one being an KCYAA Executive Board Member), the department superintendents, auction chairperson, and the exhibition manager who serves as an ex-official member.

Committee Co-Chairs

John Schut 616-204-8530 Ben Diekevers 616-893-6615

Kent County Youth Fair Superintendents and Assistant Superintendents

Dairy	Renee McCauley	616-283-6411	Market Dairy	Darcy Snarski	616-437-0773
Beef	Josh Beukema	616-644-0761			
	Jenna Young	616-799-0468			
Sheep	Kara Schut	517-881-4091	Assistant	Kendra Lloyd	616-685-9446
Goat	Autumn Skinner	989-506-1348	Assistant	Paige Vanderwey	616-916-2139
Swine	Heather Everett	269-838-1668			
Poultry	Mary Crosby	616-292-9006	Assistant	Shelly Johnson	616-970-6619
Rabbit/Cavy	Andrea Perez	419-350-8315	Assistant	Cathy Nitschke	616-262-7503
Horse	Travis Geerligs	616-262-9449			
Dog	Gail Roderick	616-723-5682	Assistant	Emma Wikstrom	616-482-9637
Performing Arts	Andrea Boyd	616-293-8381	Assistant		
Modeling/Sewing	Jennifer Courtney	616-884-5123			
Still Exhibits	Beth Perry	616-433-5342			
Sweepstakes	Heidi Zylstra	616-915-7634	Co Chair	Jennifer Hall	616-914-3378

Exhibition Committee Procedures

- Exhibition Committee Members:
The committee consists of the following members: committee chair or co-chairs, superintendents from each of the following departments: Dairy, Beef, Sheep, Goat, Swine, Poultry, Rabbit/Cavy, Horse, Dog, Performing Arts, Needlework, Still Exhibits, Sweepstakes. Auction chair, one KCYAA board member and one KCYAA Executive Committee member and the exhibition manager, as an ex officio member, also serve on the exhibition committee.
- Assistant Superintendents:
Board approved assistants are encouraged to attend meetings. However, they only have voting rights if their department superintendent is not in attendance.
- Meeting agenda will be as follows: Public Comments, Executive Session*, Review of Minutes
Committee and Special Reports, Old Business, New Business

**The presiding committee chair may choose, or a committee member may request to move to executive session following public comment. Executive session would include committee members, and may include assistant superintendents. Guest may be specifically requested to attend or report to the committee during the executive session.*

4. Meeting attendance:
Superintendents and other committee members may not miss more than 4 regularly scheduled meetings per year. Members may attend by phone. Meeting attendance will be published in the meeting minutes.
5. Meeting schedule:
Regularly scheduled meetings will be held at 6:30pm on the first Wednesday of each month except the months of January, August and November. The August Fair Wrap Up Meeting will be a closed meeting. Other meetings may be scheduled as needed throughout the year.
6. Voting rights:
Each department superintendent will have one vote. An assistant superintendent in that department, may vote only if the superintendent is not in attendance. The KCYAA board representative and the KCYAA Executive Committee representative each have one vote. The auction sub-committee chair has one vote. Any committee member who holds two positions **may only vote once**.
The Exhibition manager serves as secretary but does not hold voting rights in that position.
7. Quorum and Voting:
Total number of votes with everyone in attendance is 16. Each department has one vote.
If a superintendent is not in attendance, the assistant superintendent for that department may vote.
If anyone holds two seats that number would be reduced. A majority of voting members (51%) must be in attendance to conduct business. All items of business will pass with a 2/3rds vote in favor based on the number of voting members present.
8. Communication:
Meeting reminders will be sent with an agenda and any attachments necessary. Meeting agendas will be shared on the fair website. Exhibition Committee meeting minutes will be shared with the committee and posted. A report of the Exhibition Committee actions will be shared with the KCYAA board during their regular meetings by the Exhibition Manager and/or an Exhibition Committee chair.
9. Public comments and request:
As stated above the March, May, September and December meetings will have a public comment time at the beginning of the meeting. A Kent County Youth Fair Exhibition Communication Form for comments, concerns and ideas can be found on the fair website

Policies and Procedures

Code of Conduct

Exhibitors, leaders and parents, when participating in or acting on behalf of the Kent County Youth Fair, are expected to conduct themselves in accordance with accepted standards of social behavior, respect the rights of others and to refrain from any conduct which may be damaging to the Kent County Youth Fair and/or The Grand Agricultural Center.

The following actions and behaviors are PROHIBITED:

1. Disrespectful and/or unsportsmanlike behavior.
2. Profanity, vulgarity, lewd, indecent or obscene conduct and/or language.
3. Physical abuse or conduct that threatens or endangers the health, safety and/or well-being of any person/animal.
4. Theft or malicious damage to property.
5. Possession, use, or distribution of alcohol or illegal drugs.
6. Unauthorized entry use or occupancy of any facility.
7. Any conduct which threatens or interferes with the maintenance of appropriate order and discipline or invades the rights of others.

8. Dishonesty in connection with any event by cheating or knowingly furnishing false information.
9. Obstruction or disruption of any event/activity or aiding and encouraging other persons to engage in such conduct.
10. Failure to comply with directions of fair officials acting in the proper performance of their duties.
11. Failure to comply with still exhibit, horse, and/or livestock check out procedures.
12. Failure to show up for barn duty, stall duty, or exhibit building duty.
13. Undermining the authority of the Kent County Youth Fair officials.
14. Failure to comply with the Kent County Youth Fair dress code.
15. Possession or the use of firecrackers, gun powder, chemicals or other materials that can be used to create an explosive mixture.
16. Misuse of fire equipment or firearms.
17. Failure to have parental supervision overnight on the campgrounds.

Failure to comply with any component of the Code of Conduct may result in:

1. Reduction in privileges at the Kent County Youth Fair.
2. Removal from The Grand Agricultural Center of West Michigan grounds. In the case of youth, the parent(s)/guardian(s) will be contacted to arrange transportation home.
3. Disqualification from all current fair events and possible future events.
4. Other penalties may be determined by the Exhibition Committee.
5. Further, enforcement does not waive the Exhibition Committee's right to enforce penalties collectively at a later date under appropriate circumstances.
6. In some cases, the proper law enforcement agencies will be contacted.

Procedural Process for filing a complaint

1. Exhibitors, members, leaders, volunteers, fair officials (superintendents, association board members, fair staff, etc.) and/or parents must first notify an Exhibition Committee Chair of their complaint. **For complaints directly related to a show, the complaint must be filed at the Exhibition office within 30 minutes of the completion of that specific show.**
2. The Exhibition office will notify the Complaint Review Committee of the problem immediately. This committee consists of one KCYAA Association Executive Committee member, two Exhibition Committee members and the Exhibition Committee chairs.
3. Exhibitors, leaders, volunteers, fair officials (superintendents, association board members, fair staff, etc.) and /or parents compelled to bring a Code of Conduct violation complaint against an exhibitor, leader, parent or unofficial volunteer will be required to sign a letter of violation complaint (which can be obtained and completed at the Exhibition office) stating the reason and alleged grounds for registering the complaint. There is a non-refundable \$100 fee to file a Code of Conduct Violation Complaint form. Complaints will be sent to the applicable parties which may include:
 - Members of the Kent County Youth Agricultural Association Board
 - Superintendents of the Kent County Youth Fair
 - KCYAA Horse Leaders Executive Committee
 - Club Leader(s)
 - FFA Advisor
 - Members of the Complaint Review Committee
4. Any person against whom a rules violation complaint has been filed will be notified by an exhibition chair and will have the right to read the letter of complaint.

5. The Exhibition Committee will review the violation complaint in a closed meeting where all parties involved will be invited to attend, investigate the violation complaint and penalties assessed (if any) and determine whether sufficient evidence exists to merit further action.
6. If evidence exists to merit further action, the Exhibition Committee will determine and levy the appropriate penalty for the violation.
7. The Complaint Review Committee may levy the penalty if it finds there was a violation to the Code of Conduct after reviewing the incident.
8. After the appropriate penalty has been determined, all parties will be notified.
Appeals may be submitted to the Michigan Department of Ag. as stated in Ag rules section 811.10. **MICHIGAN DEPARTMENT OF AG RULES SECTION 811.10 COMPLAINTS AND APPEALS**
 - A. Exhibitors, members, leaders, volunteers, fair officials and/or parents have the right to appeal the levying of a rule(s) violation penalty or penalties according to the following process:
 - The person(s) penalized has 45 days from the date the complaint was filed with the Exhibition Committee to file an appeal with the Department of Agriculture.
 - The Department of Agriculture has 60 days to investigate the appeal and issue a report on their findings.

Exhibitor Information

The Kent County Youth Fair is open to all youth between the ages of 5 and 21. Age is determined by the exhibitor's age as of January 1 of the current year. Affiliation with a club or organization or Kent County residency is not a requirement for youth to show at the Kent County Youth Fair.

General Youth Exhibitor Rules

1. The following rules apply to each department where applicable.
2. Competitive classes are available for all youth ages 5 to 21 except in the bovine and equine departments where the ages are 7 to 21.
3. Non-competitive classes for youth ages 5 to 9 are available under the Explorer classes in livestock departments.
4. Still exhibit classes for exhibitors ages 5 to 21 with special needs are available under the Special Needs Department.
5. The rules are in effect for the current fair year.
6. All youth exhibitors, parents and leaders must carefully read and follow all rules and regulations.
7. All exhibitors are representatives of the Kent County Youth Fair during the week of fair.
8. Complete, paid online registration is required of all exhibitors. Failure to register online and pay for entries will result in the exhibitor being asked to remove the project from the grounds.
9. All complete **entries are due by June 15th** through the KCYF online entry portal at <https://fairentree.com/Public/FindYourFair> Search for **Kent County Youth Fair**. Complete entries must be paid in full by the last Friday in June. Complete entries not paid in full will be deleted from the system. To reinstate unpaid entries, the exhibitor is subject to the late entry policy found in the policies and procedures section.
10. All exhibits are subject to an entry fee. Entry fees are due in full by **July 1st**. Entry fees are as follows unless otherwise specified in the fair book:

Project Area	Entry Fee Per Head	Sale Commission	Entry Deadline	Declaration
Beef	\$5.00	5%	June 15	Nov./Dec.
Dairy	\$5.00	5%	June 15	None
Dairy Steer	\$5.00	5%	June 15	Feb. 1

Dairy Feeder Calf	\$5.00	5%	June 15	At Entry
Swine	\$5.00	5%	June 15	At Entry
Sheep	\$5.00	5%	June 15	At Entry
Goats	\$5.00	5%	June 15	At Entry
Market Goats	\$5.00	5%	June 15	At Entry
Poultry	\$5.00/cage	5%	June 15	None
Rabbits/Cavy	\$5.00/cage	5%	June 15	At Entry
Horse		n/a	June 15	May 1
Dog	\$.50/class	n/a	June 15	May 1
Still Exhibits	\$.50/class	5%	June 15	None
All Explorers	No fee	n/a	June 15	None

11. Entry fees are non-refundable unless the exhibit is canceled no later than July 15 or due to the death of a project animal. Still exhibit entry fees are non-refundable. Approval must be given by the superintendent or a fair official before refunds will be given.
12. Changes to breeding stock classes must be approved by the superintendent of the project area. *Any additions after the June 15th deadline are subject to the board's late entry policy.*
13. Exhibitors may enter only one exhibit/project/animal in each class. Some livestock areas allow more than one entry per class. In all instances, premiums will only be paid for one project per class. Please refer to each department's rules for exceptions and restrictions for that department.
14. Classes requiring a Project Sheet or Educational Component are indicated in each department.
15. All forms, record books and project sheets submitted for the current fair year must be current versions from the Kent County Youth Fair website, www.kcyf.org.
16. A club exhibit is a project in which the club or part of the club works together to complete the project. Club entries must be made by the club under the club's name as an exhibitor. Individual exhibitor names will not be accepted under class entries that are marked as club entries.
17. Each exhibitor must exhibit their own project and follow the barn/building rules where their project is on display.
18. All exhibits are required to arrive on the grounds by the time designated in each department and must remain on display for the full week of the fair.
19. Exhibitors are required to be present at all judging of classes in which they are entered. However, conflicts may occur among the different areas. In these instances where conflicts occur, exhibitors are required to speak with the superintendents of each department in the conflicting areas to arrange for having their project judged in the exhibitor's absence. Failure of the exhibitor to make these arrangements may result in the loss of premiums for that class and the inability to sell their project at auction. The fair will not be held responsible for classes missed without prior notification from the exhibitor.
20. All still exhibits must be presented to the judge with a completed exhibit tag. Other exhibit tags will be determined per department. Exhibit tags are printed by the office and included in the club packet.
21. All exhibitors are expected to be able to tell the judges about their project and what has been learned.
22. Exhibitors are responsible for the care of their projects during fair week. If they are not camping or at the fairgrounds, someone must be designated by them to be responsible in case of emergency or special needs, such as their club leader or parent.
23. Everyone exhibiting will be expected to participate in barn/building duty during Fair week. Failure to cooperate in barn/building duty could result in a fine equal to the amount of premiums, revoked show privileges and/or a dismissal from Fair.

24. Premiums are awarded according to the published schedule after each class in the fair book. Premium schedules are located at the back of the fair book. Failure to meet department/class/section requirements will result in a lower rating.
25. Premiums will be paid by check or in cash. Premiums will be available at the same time as Auction Checks. This information will be communicated once the checks are ready. Exhibitors must sign for their premiums.
26. Premium checks must be cashed within 60 days of when the check was written. Checks may be re-issued after the 60 day period, upon request. Checks requested to be reissued will be subject to a \$25 check cancellation fee, to be paid in cash, if the expired check is not returned to the office.
27. The Kent County Youth Agricultural Association shall have the power to make notable deductions from premiums offered, if in their opinion, the financial condition of the Association prohibits it from fulfilling its commitments.
28. No project is to be removed from the exhibit area prior to the release date and time published in the fair book.
29. The fair board, project superintendents, fair staff and programming committees are enthusiastic about giving every opportunity to youth to complete their project(s) by exhibiting at the Kent County Youth Fair. The Fair Board recognizes that there are situations where an early release is necessary. In instances where the fair dates conflict with personal schedules, exhibitors should contact their project superintendents to obtain information regarding alternative methods of exhibiting or completing their project. Early releases of projects are allowed under specific circumstances. Please see the early release policy under the Board Policies and Procedures section.
30. Removal of any exhibit prior to the published release time without proper approval will not be tolerated and may result in fines to be determined by the department superintendent. Please see the Unexcused Early Removal policy under the Policies and Procedures section.
31. Failure to comply with the Kent County Youth Fair rules may result in the exhibitor being unable to show at the Kent County Youth Fair in the following fair year.
32. The judge's decision is final. There will be no re-judging of classes once the class placings have been turned over to the superintendent and/or office.
33. The type of award given for each class will be determined by the superintendent in conjunction with the KCYF Ribbons & Trophies Committee.
34. The fair is not responsible for lost, stolen, or damaged trophies/ribbons/awards.
35. All trophy-winners are encouraged to send a thank-you note to the sponsor(s) noted on the base of each trophy within two weeks of the close of fair.
36. The fairgrounds will be patrolled 24 hours a day.
37. The livestock barns open to the public at 9 am. The exhibit building opens to the public at 10 am.
38. All exhibit areas and barns will close at 10 pm each night except for Saturday, the last day of fair, in which case the livestock barns & exhibit building will close at 9 pm. Only barn captains, board directors, staff and/or superintendents will be allowed in the barns after closing time.
39. The Kent County Youth Fair is not responsible for exhibits left on the grounds at the conclusion of fair.
- 40.. No bicycles, skateboards, or rollerblades are allowed on the fairgrounds.
41. No animals (including dogs, non-exhibiting animals or fair animals) are allowed in any non-barn area of the fairgrounds including camping or eating areas from the Saturday beginning of fair through the Sunday ending fair. Service animals and properly identified exhibitor project animals are the exception. Exhibit animals are to remain in their designated areas. Project dogs must wear their project dog identification. See Department 22 for qualifications.
42. Service animals are allowed. A service animal is defined as any animal that is trained to do work or perform tasks for the benefit of an individual with a disability. Pets providing emotional support, well-being, comfort or companionship are not recognized as service animals under ADA regulations.
43. We do not have a severely restrictive dress code, but do ask our exhibitors and show attendants to follow the KCYF Dress Code while exhibiting in any project area and in the auction rings. All Superintendents and parents are asked to support and encourage the dress code. Please see the KCYF Dress Code under the Board Policies and Procedures section.

44. All exhibitors of the Kent County Youth Fair are required to volunteer for two (2) hours prior to the fair, during the fair or the week after the fair. There are many volunteer opportunities available. Exhibitors will have the opportunity to sign up for volunteer opportunities through the website www.signupgenius.com.
45. Please note the separate department and section rules and regulations in each specific area of the fair book.

Kent County Youth Fair Exhibitor Dress Code

1. Clothing displaying profanity or vulgar suggestions will not be permitted by any exhibitors.
2. Clothing advertising drugs or alcohol or dealing with death, destruction or suicide will not be worn by any exhibitors (no skulls, blood, etc).
3. No exposed undergarments are permitted by an exhibitor. Pants must be appropriately fitting.
4. Superintendents will use his/her discretion if there is a question as to appropriate attire.
5. Superintendents may also apply a stricter set of rules for safety purposes to their building.

Show and Sale Ring Dress Code

1. Appropriate clothing for your particular project area is to be worn during showing and in the sale ring. Tank tops, spaghetti straps, bare midriffs, muscle shirts, conspicuously thin garments, shorts, and miniskirts will not be accepted.
2. Appropriate closed toed footwear is **required**. No open type shoes (i.e. sandals, flip-flops).
3. Superintendents will use his/her discretion if there is a question as to appropriate attire.
4. Superintendents may allow exemptions for their department when necessary.
5. Cellular phones are not permitted in the show/sale ring.
6. Questions about dress code should be directed to the department superintendents.

Release of Animals at Conclusion of Fair

Saturday

5:00 pm - Horse and Still Exhibit Release

6:00 pm - Dairy and Beef Release

6:00 pm - Goat, Sheep, Processed Market Animals may leave as early as 6:00pm.

7:00 pm - Rabbit, Cavy

8:00 pm - Poultry

Early Release Policy

1. Early release forms are available at <https://www.kcyf.org/kcyf-departments>.
2. The following reasons have been established for early release by the Exhibition Committee:
 - a. If the livestock project is deemed by a veterinarian or superintendent with board member approval to be seriously sick or injured.
 - b. If the livestock projects show signs of unnecessary meanness or unruliness which could jeopardize the safety of the exhibitor, other exhibitors or spectators.
 - c. The exhibitor is a member of a breed or livestock association and is in competition for points and meets the following conditions:
 - He/she must be in good standing.
 - He/she must submit a letter of request to the Exhibition Office by July 1st.
 - A letter from the show or points secretary of the association involved must accompany the request indicating the current status of the individual's point standings.
 - He/she must produce a show bill from the horse/livestock show involved with the signature, date and telephone number of the show secretary.
 - He/she must produce proof of attendance at the specific event.

- d. A scheduled family event from which the exhibitor has no control over the date (i.e. wedding).
3. Exhibitors must submit a completed Early Release Request form to their project superintendent no later than July 1st prior to fair.
4. Early release forms must be completed for each project area in which the exhibitor participates.
5. The project superintendent will keep copies of all early releases to be reviewed by the KCYAA Exhibition Committee and must be submitted to the Exhibition office.
6. The project superintendent will keep copies of all early releases to be reviewed by the Exhibition Committee and must be submitted to the fair board secretary.
7. Approval will be given jointly by the project superintendent and a majority of the exhibition committee members. For project areas that do not have a superintendent, a KCYAA Exhibition Committee member will participate in the approval process.
8. Approval will be given to the exhibitor in writing prior to the first day of the fair.
9. In emergency situations that require an early release, approvals must be obtained from three persons consisting of the project superintendent, the exhibition committee chair and another exhibition committee member.
10. Approved early release shall be no earlier than 7 pm Friday evening of fair.

Late Entry Policy

1. Late entries, upon Superintendent approval, must be submitted by July 1st.
All entry payments are due by July 1st.
2. Exhibitors requesting late entry agree to the following:
 - a. A late entry fee of \$100 for each exhibitor will be assessed.
 - b. Entry fees will be doubled for each class that the exhibitor enters late.
 - c. Late entry exhibitors forfeit their premiums.
 - d. Late entries must be paid in full within 24 hours of submission.

Unexcused Early Removal of Exhibits Policy

1. The person suspecting an unexcused early removal of an exhibit should report it to the Fair Office. This should be done as soon as possible after noticing the exhibit is missing.
2. The Fair Office staff will contact the Superintendent of the area.
3. The Superintendent will:
 - a. Check the online entries and judging results for a record of the reported exhibit.
 - b. Perform a visual inspection of the area where the exhibit should be displayed to verify status of exhibit.
 - c. Refer to their approved early release exhibitors to determine if they had been granted early release.
 - d. File a report with the Fair Board Secretary for necessary action to be taken at the next scheduled Fair Board meeting.
4. The KCYAA Board will act at its next scheduled meeting on the recommendation of the Project Superintendent. The exhibitor will be notified in writing of the board action within 21 days of the meeting. The exhibitor in question may appeal to the KCYAA Board at the next scheduled meeting if they choose to file a grievance. The KCYAA Board will hear the appeal and reconsider its action. The KCYAA Board decision is final.
5. Failure to comply by release time rules may result in the exhibitor being unable to show at the Kent County Youth Fair in the following fair year.

Explorer Exhibitor Rules

1. Explorers are exhibitors ages 5 to 8 who wish to show their livestock projects non-competitively.
2. Exhibitors ages 5 & 6 are required to be explorers in the bovine and equine departments..
3. Explorers are not limited to the number of animals they would like to show.
4. Explorers must meet all enrollment forms and deadlines.
5. Explorers do not pay entry fees.
6. Explorers are to complete Project Sheets/Record Books when required by the class.
7. No Explorer projects are to be sold at auction.
8. Explorers receive Explorer ribbons.

9. Livestock Explorers

- a. Explorers may enter any livestock area with the permission of parent and/or leader. All livestock areas are included.
- b. Each Explorer showing livestock shall have a mentor for each livestock area in which they are exhibiting. Mentors may be an exhibitor over age 13, a leader, or a parent and must be designated at entry. The mentor will remain in direct contact and communication with the Explorer during exhibition, as well as to and from any holding areas and en route to and from exhibit area. The mentor must assist the Explorer in the exhibit arena as much as he/she feels necessary even to the extent of handling the livestock for safety measure. The mentor must work with the Explorer at least 2 times prior to fair.
- c. Explorers may participate in non-competitive Showmanship as well as Explorer Fun Classes with the assistance of a mentor.
- d. Explorers may bring their own animal for the day or show an animal that is already on the grounds.
- e. No Explorer livestock shall be housed on the grounds except the rabbits/cavies. Explorers in the rabbit/cavy department that are staying on the grounds for the week of fair may request a cage for their animal. Cages are assigned on an availability basis.
- f. Explorer animal project record books are required and are available online at KCYF.org
- g. Each Explorer will present their completed record book at the time of showing. This is intended to be a fun and educational experience for our youngest exhibitors.

Special Needs Exhibitor Rules

Special Needs Advocate: Kim Mebert: 616-307-0658

Our Special Needs Advocate will assist in ensuring a safe, enjoyable learning experience at our fair.

1. The Kent County Youth Fair offers a still exhibits department for our youth with Special Needs.
2. Youth entering the special needs classes will have a specific judging line on the day of judging.
3. General rules for still exhibits and each department still apply.
4. Evaluation of exhibits on judging day will be determined by each individual exhibitor's abilities. Exhibits will not be evaluated using a department/class standard.
5. All classes remain the same but youth with special needs will enter Department 99.
6. Youth with special needs are encouraged to enter the livestock departments.
7. Please notify the Special Needs Advocate and superintendent so they can make needed adjustments to their program and show.

Still Exhibit Exhibitor Rules

1. All still exhibits must be entered and judged on the Saturday before Fair between 10 am and 3 pm. This does not include Performing Arts, Youth Citizenship, Demonstrations or Tractor Driving. Judging times for these areas are listed in the fair book.
2. All exhibits must be an original piece created by the exhibitor since the conclusion of the previous year's fair.
3. Exhibits that are presented stained, soiled or entered improperly may be disqualified.
4. All classes marked as "Any Other" must turn in a written description of their project to the judge. "Other Class Record Sheet" is available at www.kcyf.org.
5. The exhibitor is responsible for bringing their still exhibit before the judge for the evaluation process.
6. If the exhibitor will be absent on the day of still exhibit judging, they may request approval for another exhibitor or adult to bring their project before the judge for evaluation. Requests for absentee judging must be received by the fair office two weeks before the judging of still exhibits. In your request, please include your name, club (if applicable), reason for absence and who will be presenting your exhibits for evaluation. All exhibits of an absentee exhibitor must be accompanied by an Absentee Judging Sheet. Approval will be granted by the superintendent or a fair official. The form for absentee judging is available at www.kcyf.org.
7. All still exhibits are on display in the exhibit building by club. Clubs may enter the club booth class. Clubs are encouraged to decorate their booths according to the current theme for the Kent County Youth Fair. Please refer

to the Exhibit Building Set-Up, Responsibilities and Housekeeping Guidelines under the Board Policies and Procedures section.

8. All exhibits must be displayed in a booth with the exhibit tag securely attached to the project. The exhibit tag must be visible to the public.
9. All still exhibits must be in place in the club booth by the Monday of fair at 12 noon.
10. It is the Fair Board's opinion that perishable foods and flowers should be removed from the display when they begin to deteriorate. The exhibit tag, project sheet and award must remain on display. Perishable exhibits do not require an early release approval.
11. **All still exhibitors are required to serve two hours of either security detail, pre-fair setup, or assist the department during fair.**

Exhibit Building Set-Up, Housekeeping, and Security Responsibility Procedures

1. Clubs will request a club booth space.
2. Club booths may be set up on **Thursday, Friday, Saturday and Sunday** preceding fair from **9 am to 10 pm ONLY**. Please adhere to these specified set-up times.
3. The community booth is for independent exhibitors or smaller clubs. It is the responsibility of those exhibitors to set up, display and maintain their projects in the community booth.
4. Please bring your own tools and supplies for setting up your booth.
5. Booths should have some type of floor covering to protect exhibits and enhance the appearance of your booth.
6. All displays are to stay within the size of your booth. Nothing should go beyond the 4-foot depth and into the aisles. If you are using straw or loose materials, be sure that you use a kickboard to keep your materials within the booth size. Please clean up any straw or other loose materials that you use. This includes the area in front of your booth, the path traveled to bring it to your booth, and after you tear down your booth.
7. Respect your neighboring booth. Make sure if you are displaying above the height of the partition that it is neatly covered.
8. Be sure to check your booth **throughout the week for neatness**. Record books and/or posters **must** remain on display.
9. Your booth is on display and will be judged **daily**.

Security Responsibility

1. Your cooperation in following these procedures will help to limit the loss and/or damage to exhibits.
2. Your club must have no less than four (4) people per shift. You should have at least one (1) adult with teen exhibitors or two (2) adults with younger exhibitors.
3. **There will be a sign-in sheet located at the front of the club booths. Please make sure that you sign in at the start of your shift time.** Club representatives that are on duty must fulfill the entire shift time.
4. Keep an eye out for inappropriate behavior and discourage tampering of exhibits in the booths (both commercial and youth).
5. If someone is being destructive, please notify a Fair Director and give a complete description of person(s) involved.
6. Please be mindful that the Exhibit Building appearance reflects on our fair and its exhibitors. If floors need sweeping, use one of the brooms provided and dispose of trash in proper containers.

Judging of Still Exhibits

1. The judging process is a one-on-one interview between the judge and the exhibitor.
2. Absolutely no parents are allowed under the judging tents or at the judges' tables.
3. In case of illness or emergency, an exhibitor's project may be presented by the leader, teacher or other fair exhibitor. In such cases, a **Still Exhibit Absentee Judging Report**, this can be found on the forms page at KCYF.org, must be attached to each exhibit and a letter must be presented to the appropriate Still Exhibit Superintendent explaining why the exhibitor cannot be present at judging. All requests to be excused from Still Exhibit judging must be submitted no less than two (2) weeks prior to Still Exhibit judging or receive board approval in cases of illness. Upon approval, the fair office will issue the Absentee Judging Report form to the exhibitor.

4. All exhibitors are expected to be able to tell the judge about their project. The project must represent the youth's work.
5. Each individual item can be entered as one project only. Choose the class that the project fits in the best.
6. Still exhibits are judged using the Danish system with each exhibitor receiving an A, B, or C award. An exhibit that does not meet the established criteria listed in this fair book will be dropped one placing.
7. Designation of Best of Show projects will occur between 3 and 4 pm on the Saturday before fair. Best of Show projects are chosen from the Outstanding Exhibits. Outstanding Exhibit ribbons are presented to those that receive a perfect score during the judging process **and** the judge has deemed exceptional.
8. All Video Production, Creative Writing, and Computer exhibits must be turned into the fair office on the Monday preceding fair by 5 pm for judging. These projects will be returned to the exhibitor during the interview with the judge on the Saturday of still exhibit judging.
9. Club booths will be judged throughout the week. Club banner and scarecrow will be judged on Monday at 4 pm in your club booth.
10. The official records of the judges are the judging sheets from which all premiums are paid. JUDGES DECISIONS ARE FINAL. No premiums will be awarded based on ribbons or exhibit tags. If discrepancies occur, the exhibitor must show the exhibit tag with the judge's comments of the exhibit in question. Any corrections in the amount of premium issued must be requested in writing via email.

Still Exhibit Auction

1. An exhibitor may sell **one** lot in the auction.
2. Exhibitors must register for the Still Exhibit Auction in FairEntry. Item for sale does not need to be noted at registration.
3. **Exhibitors must register their item for the Still Exhibit Auction by 5 pm on the Saturday of still exhibit judging, picture of item is encouraged.** An intent to sell form is available for exhibitors to fill out and return to the drop box at the information table or at the fair office. Form is available at KCYF.org. **Exhibitors who fail to register by 5 pm Saturday of still exhibit judging will not be eligible to sell.**
4. **Proper dress code must be followed in the sale ring.** See dress code in Board Policies portion of the fairbook.
5. Exhibitors will be given a display card for their item that they choose to sell. The display card will be put in their booth by their item to help advertise items that are available at auction.
6. All food items sold must be a duplicate of the project the exhibitor had judged. All food items must be whole and at least a full dozen and **must have the recipe attached.** The attached recipe card should be 3.5" x 5" or 5" x 7". All food items must have been properly stored and kept refrigerated if needed. Items must follow Michigan Cottage Food rules.
7. All still exhibit sale items will be delivered to the buyer immediately after the item is sold. Exhibitors that do not deliver the sold project forfeit their sale proceeds.
8. **Exhibitor must be present to sell their project.**
9. Sale lots will be randomly assigned.
10. A 5% commission will be deducted from all sale lots by the KCYF.
11. Exhibitors are responsible for soliciting potential buyers. The KCYF will provide materials to assist the exhibitors with promoting the sale. The KCYF will also solicit potential buyers and promote the sale.
12. Sale checks will be distributed when 95% of the monies have been collected.
13. Perishable still exhibits sold in the auction must follow all Cottage Food Laws in Michigan. No dairy products (cheeses, cheesecakes, etc.) may be sold. Label your perishable item with your name and contact information.

Release of still exhibits at the conclusion of fair

- Tear down of the still exhibits and removal of the still exhibits will be at 5 pm on Saturday ending Fair. **There will be no tear down of the still exhibit building until 5 pm on Saturday.** Any clubs found tearing down early will have their entire club's premiums revoked.

General Livestock Exhibitor Rules

- A. All livestock entering the grounds shall be subject to all Division and/or Department of Agriculture health requirements, tagging and/or testing. A current copy of the MDARD health requirements can be found in the Exhibition Office or online at https://www.michigan.gov/mdard/-/media/Project/Websites/mdard/documents/animals/exhibitions/2023_Fairs_and_Exhibitions_Requirements.pdf?rev=5b85405b53b64a47b135c3b0f490b8ab&hash=5C41BADD9073ED47EAD2538B96574BB3.
- B. All animals entered will be judged by current breed standards. This is not a sanctioned show; however, it will be judged as such.
- C. Showmanship is required for all exhibitors in every livestock area. Livestock exhibitors must be entered and compete in a showmanship class. Superintendents may grant exceptions. Superintendents will notify the Exhibition Office of approved showmanship exceptions.
- D. Breeding stock need to be entered under the breed and class that corresponds with age and type of animal. Breed classification may be adjusted at check in if the animal does not follow breed standards it was entered under.
- E. Breeding animals must be owned or leased. **Lease Program** – It is our desire that the lease program be a learning experience that will accompany the child throughout their lives. This involves book learning and the practical everyday experience of taking care of an animal.
 - i. Any exhibitor involved in the lease program shall be required to show proof that they have worked with this animal at least one time each week during the current lease year. This proof shall be in the form of pictures or a record signed by the parents and/or the leader of the club.
 - ii. A current signed lease agreement shall be shown to the project superintendent upon request and shall be included in the record book of the individual exhibitor. Lease agreements can be obtained from KCYF.org under department forms.
- F. Bred and Owned class requirement: Exhibitor or immediate family must be the owner of the dam at time of conception.
- G. Livestock check-in and judging times differ throughout the fair week. Please refer to each livestock department or the schedule in the back of the fairbook for show times.
- H. Weights at check-in/weigh-in are the official weights for eligibility for the livestock sale.
- I. It is the responsibility of all leaders and exhibitors to bring only healthy animals to the fairgrounds. The State Health Inspector and/or Veterinarian does visit our fair to verify that we comply with the Health Requirements for livestock exhibited in Michigan.
- J. All animals will be health checked prior to being admitted into the barns/tents.
- K. Sick animals will be sent home immediately after a health check is completed on the animal. Any animals displaying clinical signs of respiratory illness, sore mouth, ringworm, lice, abscess, parasites, etc. will not be allowed to stay at the fair.
- L. Superintendent reserves the right to refuse any animal showing symptoms of a disease, condition, or parasitic infection.
- M. Animals that begin to exhibit symptoms at any time during the week of fair will immediately be sent home.
- N. All animals must have the proper identification. In the event of missing market animal identification tags, an exhibitor must report the missing identification tags immediately to the superintendent for approved replacement identification. If an exhibitor and/or family does not report this to the superintendent, the animal may be refused entry to the fair. If there is a discrepancy with identification tags, the exhibitor and/or family has the right to give an explanation to the superintendent and the livestock committee to determine eligibility to participate that year. If the same exhibitor and/or family has a discrepancy in future years, the animal(s) will be sent home and not allowed to be shown.
- O. Only animals that will be shown at the fair can be housed in the barns/tents during fair.
- P. All animals checked in at fair must show in their respective classes unless they are exempted by that department superintendent. Failure to comply will result in \$100 per head, per day housing fine AND 1 year suspension from that department.

- Q. Barn layout and pen assignments are the sole responsibility of the department superintendent. Any changes or modifications must be under the superintendent's approval and supervision.
- R. Exhibitors bringing animals will furnish their own bedding, hay and feed. Exhibitors are responsible for providing their own feeders/waterers unless otherwise specified in each department. Exhibitors will feed and care for their animal until it leaves the grounds and are responsible for keeping animal pens clean during the fair through 10pm on Saturday ending fair week.
- S. Livestock exhibitors and their clubs are responsible for the removal of manure and bedding from the stalls/pens upon arrival to fair and departure of animals and clean-up their project area. The Fair Board has the right to issue a warning and then a \$50 fine up to removal of individual and club exhibit.
- T. If an animal is not removed by 11am on the Sunday after fair, the animal becomes the property of the Kent County Youth Fair.
- U. The objective of Herdsmanship classes is to foster club teamwork as the exhibitors use their creativity to decorate their section of the barn and demonstrate good animal care and cleanliness to the viewing public. Decorations that increase fire hazard will not be allowed. Herdsmanship classes are entered under the club or farm name as the exhibitor in FairEntry.
- V. You may NOT participate in showmanship in a livestock project area unless you own or are leasing your own animal for exhibition in that project area at fair. Exception to this rule may be granted by the appropriate project Superintendent on a case by case basis.
- W. Superintendents must be notified in writing 24 hours prior to the showmanship class if an exhibitor has health issues that affect their showmanship skills.
- X. By entering your animal in the fair, you are giving implied permission to allow your animal to be used in Showmanship Sweepstakes.

Market Livestock Exhibitor Rules

- 1. Market animals must be owned by the exhibitor.
- 2. FFA chapter animals need to be signed up under the FFA chapter name, not the exhibitor. FFA exhibitors should sign up as independents. FFA chapters can not be used as a club.
- 3. Market animals being sold must be sold by the exhibitor. Exhibitors must be present to sell their animal(s).
- 4. Participation in the education classes, Showmanship, and respective market classes by the exhibitor are required to be able to sell the project animal.
- 5. Completion of a market record book or a department designated educational experience is required for market animals to sell.
- 6. An exhibitor may not sell any market project (live animal) at the Kent County Youth Fair that has been or will be sold at another fair in Michigan during the same calendar year by that exhibitor or any other exhibitor. Penalty will be that the exhibitor will be ineligible to show in ANY project area of the Kent County Youth Fair in the following year.

Livestock Auction

- 1. Each exhibitor may sell one animal in each of the following market classes: hog, sheep and goat.
- 2. Each exhibitor may sell one bovine.
- 3. Small animals can sell as allowed in their departments.
- 4. Exhibitors of Grand Champion animals in the sheep, goat, swine or bovine departments may sell their second animal in each species.
- 5. The Large Animal Auction begins at 9 am on Thursday of fair beginning with the sale of the goats.
- 6. The Small Animal & Still Exhibit Auction begins at 5 pm on Friday of fair.
- 7. The exhibitor is responsible for providing a photo to be used at the auction.
- 8. Sale Order:
 - a. The Small Animal & Still Exhibits sale order is as follows: poultry, rabbits, still exhibits.
 - b. The Large Animal sale order is as follows: goats, sheep, beef feeders, beef, dairy feeders, dairy market, swine.
- 9. The superintendent of each department will determine when the champions will sell in their sale order.

10. All market livestock exhibitors must certify that their animal(s) are free of drugs. These forms are incorporated into your online entry registration. Exhibitors must answer the question, or their entries will be voided.
11. Grand Champions of each market species are required to sell in the livestock auctions.
12. Large animal exhibitors wishing to not sell their animal in the auction (except for Grand Champions) must notify the fair office in writing by **9 pm on Sunday** beginning of fair. The form is available in the Exhibition Office. If the Exhibition Office does not receive notification by this time, animals are required to be sold.
13. The coordination of the animal removal is the responsibility of the exhibitor. If the animal is not removed at release time on the final Saturday of fair, the animal becomes the property of the Kent County Youth Fair.
14. The Kent County Youth Fair will offer Quality Assurance training for its exhibitors. For the purpose of the auction, the KCYF will have certified member designees for the BQA and YQCA.
15. **Only the exhibitor will be allowed in the ring.**
16. **Sale announcements are limited to department fundraisers that are to be explained. Individual exhibitors may not have additional announcements shared.**
17. The first sale of monies (less commission) goes to the exhibitor. Resales are allowed in both the Small Animal/Still Exhibit and Large Animal sales. Resale funds go to the department.
18. Commission will be applied to all special sales/projects and will go back to the fair.
19. Livestock sale checks will be mailed when 95% of all sale monies have been received.
20. Livestock sale checks must be cashed within 60 days of when the check was written. Checks may be re-issued after the 60 day period upon request. Checks requested to be reissued will be subject to a \$25 check cancellation fee if the expired check is not returned to the office.
21. We encourage exhibitors to thank their buyers & provide a picture of their project animal to buyer, but request that they refrain from doing so during the auction.
22. All department fundraisers will be sold at the end of sale. They will sell in the same order as the departments are listed in the sale.

Fair Entry Instructions

1. Online entry is required of all exhibitors. Failure to register online and pay will result in the exhibitor being asked to remove the project from the grounds.
2. All entries are to be completed online at <https://faireentry.com/Public/FindYourFair> search Kent County Youth Fair.
3. Select the department/section/class/subclass that corresponds with your project. Breeding stock need to be entered under the breed and class that corresponds with age and type of animal. Breed classification may be adjusted at check in if the animal does not follow breed standards it was entered under.
4. Exhibitors that do not submit their complete entries by **June 15** are subject to the Late Entry Policy in the Board Policies and Procedures section.
Note; Once you hit the submit button, watch for an email response confirming your submission. If you do not see a confirmation email check that you did hit submit.
5. Completed and submitted entries must be paid in full by **July 1st**. Entries not paid in full will be deleted from the system. To reinstate unpaid entries, the exhibitor is subject to the Late Entry Policy found in the Board Policies and Procedures section.
6. Exhibitor numbers are automatically assigned upon entry into FairEntry.

SHOWMANSHIP SWEEPSTAKES

Co Chairs: Heidi Zylstra: 616-9157634 heidi.tena@gmail.com

Jennifer Hall: 616-914-3378 spaansjennifer@gmail.com

The top Intermediate and Senior Showmanship winners of horse, dairy, market dairy, beef, sheep, swine, goats, market goats, poultry, cavy, dogs, and rabbits will compete in a Showmanship Sweepstakes. Each participant shows all 12 types of livestock. Poultry, cavy and rabbits are shown individually to the judge. All others are shown in a group of 12. Minimum age is 13 years old as of January 1 of the current Fair year. An exhibitor that wins Intermediate or Senior Sweepstakes cannot participate again in that same level. Past Intermediate Sweepstakes winners can compete on the Senior level once they reach that age. The Kent County Showmanship Sweepstakes was first introduced by Robert Knisely, Dairy Extension Specialist. The competition was patterned after Little International, a showmanship contest at Michigan State University, sponsored by the Block & Bridle Club. The purpose of this contest is to broaden the knowledge of each participant's showmanship abilities and to recognize those individuals who have met the challenge of acquiring showmanship skills across multiple species. It is a competition where qualified Senior (and Intermediate) showmen compete against other showmen from other represented species, in a showmanship class of each species to determine the champion overall showman. The Sweepstakes Committee runs the event and works with the animal superintendents on the implementation of the event details. Our mission is to run an event that is fair, efficient, fun and enjoyable to the public.

CONTESTANT-SPECIE REPRESENTATION

All contestants must represent the species in which they qualified first. There will be no choice if the contestant qualifies in a second area. The winner of each showmanship class has until the end of their species' show to make a decision regarding their participation in sweepstakes. Once the exhibitor has committed to representing their species, they cannot renege on their decision without permission from both their department superintendent and the sweepstakes superintendent. The contestant from any one species cannot be any lower than the next eligible exhibitor up to third place showman or there will be no representation for that species. Contestants must be valid fair exhibitors, with a premium statement submitted by June 15 on file at the fair office as stated in the "Fair Entry Instructions" portion of the fair book. Contestants' showmanship animals or animals from their family herds will not be allowed to participate.

CODE OF CONDUCT

Use of cell phones or texting devices is prohibited during the competition. No study materials will be permitted once the competition starts. Contestants must sit in designated bleacher area when not showing. Please limit communication to fellow contestants or the judging table if you have a question. Disciplinary action will be decided by the Sweepstakes Committee and a KCYAA board member on a case by case basis. Penalties could range from points deduction to disqualification.

SCORING

Judges assigned points to exhibitors by giving a placing to each contestant. Each placing shall be assigned a low range score from 1 to 12. These placements will be kept confidential from the exhibitors until scores are shared after the contest is over. The showman with the lowest score at the end of the contest will be declared champion overall showman for the Senior or the Intermediate class. In case of a tie for winning score, the contestant with the lowest high score wins. If high scores are equal, ties are broken based on the first differing score. Scores are kept in the strictest confidence. There are 2 score keepers who check each other's totals. The data is given to the Sweepstakes chairperson who sends individual score letters promptly after the fair is over and then deletes the data.

AWARDS

The winning contestants in the Senior and Intermediate Divisions each will be awarded a Showmanship Sweepstakes trophy. All contestants are given a sweepstakes T-shirt to wear.

KENT COUNTY YOUTH FAIR ROYAL COURT

The Royal Court is a group of exhibitors chosen to represent the Kent County Youth Fair for one full year beginning at coronation during the opening ceremonies. Court members participate in parades, public appearances, promotional events, community service projects, and other events throughout the year.

Eligibility:

1. All applicants must be a current exhibitor at the Kent County Youth Fair.

Royal Court Liaison:

The Royal Court Liaison is focused on professional development as exhibitors prepare to transition into adult roles. These exhibitors will work in conjunction with the Royal Court Committee and the Royal Court members throughout the year including participating in committee meetings, working to further the Royal Court Program and the Kent County Youth Fair as a whole.

1. Must be between the ages of 19 and 21 as of January 1st of the current year. (Fair Age)
2. Consideration will be given to those who have participated in the Royal Court Program but prior participation is not a requirement.

Senior Court:

1. Must be between the ages of 15 and 19 as of January 1st of the current year. (Fair Age)
2. Must have exhibited at the Kent County Youth Fair for at least three years.
3. Exhibitors who have been a past Senior King or Queen may run for Senior Court but will not be allowed to be named Senior Queen or Senior King again.

Junior Court:

1. Must be between the ages of 12 and 14 as of January 1st of the current year. (Fair Age)
2. Exhibitors who have been a past Junior King or Queen may run for Junior Court but will not be allowed to be named Junior Queen or Junior King again.

Prince and Princess Court:

1. Must be between the ages of 9 and 11 as of January 1st of the current year. (Fair Age)
2. Exhibitors who have been a past Prince or Princess may run for Prince and Princess Court but will not be allowed to be named Prince or Princess again.

Requirements:

All applicants must submit the appropriate application by **June 2nd** and participate in the interview process to be considered for a position.

Applications:

Royal Court applications are due **Monday June 2nd, 2025**. Applications can be found on the Royal Court page of the KCYF website, KCYF.org.

Interviews:

Interviews will take place at **5:30 on June 20th, 2025** at the Fairway Event Center.

There will be a mandatory orientation and training day on **July 19, 2025** for all 2025 court members.

Judging:

- Judges' decisions will be based upon the applications, speeches, and interviews. The make-up of the Royal Court will be determined by the judges based on the ability of the individual applicants to positively represent the Kent County Youth Fair.
- Introduction Speech and Interview: All applicants will give an introduction speech and participate in a private interview with a panel of judges.
- Senior Speech and Final Question: Senior applicants will conclude the evening with a final speech. The topic and length of the speech will be disclosed in a letter sent to all senior applicants after submission of their applications. The judges may choose to pose a final question to the senior applicants at the conclusion of their speech.

Please contact the Royal Court Committee at royalcourt@kcyf.org or 616-485-1653 with questions.

DEPARTMENT 1 - Membership, Camping, Parking, Golf Cart/UTV & Add-a-Bid

See Department 1 in Fairentry (sign up for membership under one family member only)

SECTION 01 - Membership in the KCYAA

1. Open to individuals 18 years of age or older as of annual meeting date.
2. Dues are \$20.00 per year and must renew annually by October 1st.
3. Members are entitled to vote at the KCYAA Annual Meeting and will receive a complimentary parking pass for the following year's fair and discount on rentals for the current membership year.

Class #	Description	Fee(s)
01	Membership	\$20

SECTION 02 - Camping

1. Camping is limited to active exhibitors and their families.
2. All exhibitors/parents/chaperones on the campgrounds must adhere to Kent County Youth Fair rules.
3. All campers will be required to check in with the camping chairperson prior to parking their camper on their site.
4. Camping is limited to designated spots only.
5. Camper/Trailer must remain in the leased site.
6. Exhibitors must have parental permission and be adequately chaperoned by parent(s) or leaders if staying in the campground.
7. Chaperones must be 21 years of age or older.
8. Quiet time starts at 11 pm Monday through Thursday. Curfew on Friday is midnight.
9. A list of tenants and their lot number MUST be turned in with registration by June 15. Changes to the tenants must be reported at check in.
10. Each tenant must post their lot number in a visible spot on their camper that is closest to the driveway in order to help locate tenants in the event of an emergency and to assist in the pumping of campers throughout the week.
11. Pumping services are available by registering with Guest Services.
12. Campfires are allowed in designated areas with a fire ring. See camping chairman for approval.
13. No animals are allowed in the campground except for service dogs and dogs registered to show at fair.
14. No bicycles are allowed.
15. Trailer/Camper and vehicle must fit in the allotted site. Only one car is allowed on a lot and absolutely NO cars or wheels can be on the drive, NO EXCEPTIONS.
16. A maximum number of eight (8) people are allowed on each campsite. Groups with more than eight people must purchase an additional campsite.
17. Campsites are for sleeping quarters only **NOT** for storage trailers or parking vehicles. Trailers have a designated parking area in the overflow trailer parking area.
18. Campers over 30' must park their vehicle in the campground parking overflow lot. Parking passes must be posted in vehicle.
19. Parking permits are required for all vehicles. Vehicles without a posted valid campground parking permit will be towed at owner's expense.
20. Additional vehicles must park in the Exhibitor Parking Lot that is provided and **display a parking pass**.
21. Speed limits in the campground and parking lot are posted at 7.5 mph.
22. Exhibitors/Parents/Chaperones not complying with the above rules and regulations will be sent home with their camper.
23. Camping disputes are to be brought to the attention of the camping chairman. Disputes will be settled through the Kent County Youth Fair Code of Conduct policy.

Class #	Description	Fee(s)
20	Member Camping- available to families with membership in the previous year.	\$100
21	Exhibitor Camping	\$125
22	Superintendent and Board Camping	

SECTION 03 - Parking Passes

1. All vehicles, including those in the camping area, will be required to obtain a parking pass (daily or weekly) upon arrival at the fairgrounds.
2. Parking pass **MUST** be visibly displayed on the dashboard during the vehicle's stay on the fairgrounds, parking passes are non-transferrable.
3. Any vehicle **NOT** displaying a parking pass will be removed at the owner's expense.
4. There will be no overnight parking in the visitor parking lot(s). Vehicles parked in visitor parking lots between midnight and 5 am will be towed at the owner's expense.
5. Loading zones are for loading or unloading **ONLY**. Vehicles parked in these zones in excess of the posted allotted time limit will be removed at owner's expense.
6. Stock trailers are to be parked in designated trailer parking areas **ONLY**.

Class #	Description	Fee(s)
30	Weekly Parking Pass	\$ 20.00

SECTION 04 - Golf Cart / UTV Registration

1. Permits will only be issued to licensed drivers for a fee of \$30.00.
2. Permits must be on display at all times.
3. All drivers must be 16+ and have a valid driver's license. (List all licensed and approved drivers on back page)
4. No golf carts/utv's are allowed on the midway between 8am and 11pm with the exception of designated courtesy carts and the trash removal vehicle.
5. One person per seat. NO persons may sit on laps.
6. Speed limit is 5 mph.
7. Any liability associated with the golf cart will be assumed by the registered owner.
8. Must carry golf cart /utv on its own insurance policy with liability limits of \$250,000/per person and \$500,000/occurrence or single limit no less than \$500,000. If on a farm policy an approval will be at the fair office's discretion.
9. Always yield to pedestrians and livestock.
10. Parking is in designated areas only.
11. Parking in campground must be within the campsite.
12. Non-golf cart vehicles must be a utility vehicle. **No 4 wheelers or utv's without a utility function will be allowed.**
13. Failure to follow these rules can result in prompt removal of golf cart or UTV and other consequences at boards discretion.

Class #	Description	Fee(s)
40	Golf Cart / UTV Registration	\$ 30.00

SECTION 05 - Add-a-Bid - Every fair exhibitor should enter the Add-a-Bid class.

Class # 50	Add-A-Bid Class
------------	------------------------

DEPARTMENT 2A - YOUTH DAIRY

Superintendent: Renee McCauley: 616-283-6411 tumbleweedcows@comcast.net
Assistant Superintendent:

FAIR WEEK

All animals, except for cows that are milking, must be on the grounds and stalled by **9 am Monday** morning.

Showmanship Sweepstakes Qualifying - **7pm Monday**

Show Time: Showmanship – 10 am Friday

Type classes immediately following Showmanship

Release Time: **6pm Saturday** end of fair

Fair Exhibit Requirements:

1. Anyone who shows a milking cow must also have an unfreshened dairy heifer on exhibit in the barn for the entire week of fair.
2. Any cow entered in the production contest to be considered for the high production award must be shown in the dairy show on Friday morning. If the cow is not exhibited in the dairy show, the exhibitor will be ineligible for the high production award.

SECTION 01 – DAIRY BREEDING

Class #	Description	Class #	Description	Class #	Description	Class #	Description
200	Holstein	202	Jersey	204	Ayrshire	206	Red & White
201	Guernsey	203	Brown Swiss	205	Milking Shorthorn	207	Any Other Breed

SubClass #	Description	Entry Fee
2000	Spring Calf - 3/1 - 4/15 year of fair	\$5.00
2001	Winter Calf after 11/30 prior year to fair – before 3/1 year of fair	\$5.00
2002	Fall Calf – after 8/31 - before 12/1 prior year of fair	\$5.00
2003	Summer Yearling – after 5/31 - before 9/1 prior year of fair	\$5.00
2004	Spring Yearling - after 2/28 – before 6/1 prior year of fair	\$5.00
2005	Winter Yearling Heifer – after 11/30 2 years prior - before 3/1 prior year of fair	\$5.00
2006	Fall Yearling – after 8/31 – before 12/1 2 years prior	\$5.00
2007	Two-Year-Old Milking Cow – after 8/31 3 years prior – before 9/1 2 years prior	\$5.00
2008	Three-Year-Old Milking Cow – after 8/31 4 years prior– before 9/1 3 years prior	\$5.00
2009	Four-Year-Old Milking Cow – after 8/31 5 years prior – before 9/1 4 years prior	\$5.00
2010	Aged Milking Cow, five years and older, born before 9/1 5 years prior	\$5.00
2011	Dry Cow, must have had at least one calf in the previous 18 months to fair.	\$5.00

SECTION 02 - DAIRY SHOWMANSHIP

Class #	Description
231	Senior Showmanship, 17-21
232	Intermediate Showmanship, 13-16
233	Junior Showmanship 10-12
234	Novice Showmanship, 7-9
235	Explorer Showmanship and Record Book, 5-9

Section 03 - DAIRY SHOWMANSHIP Sweepstakes Qualifying

A Senior or Intermediate Exhibitor, who is interested in qualifying for showmanship sweepstakes, can participate in this showmanship competition. This is an additional class to be offered at 7:00 PM on Monday. **Dairy youth exhibitors must still exhibit their project in the breed show on Friday and are also required to participate in dairy showmanship class on Friday to complete their eligibility for representing the dairy department in the showmanship sweepstakes competition.**

The first place individual in the Senior and Intermediate age classes of the Showmanship Classes offered Monday night will be the dairy youth exhibitor selected to represent the department in the Showmanship Sweepstake event offered Saturday. Youth must use their own project.

Class #	Description
237	Senior Showmanship Sweepstakes qualifying, 17-21
238	Intermediate Showmanship Sweepstakes qualifying, 13-16

PRODUCTION RECORDS

All females having completed a lactation record of at least 120 days with an extended 305-2x-ME record will be eligible for the production award. Cows must be on official test. Copy of production records must be presented to the superintendent. **The exhibitor of the overall champion production cow will sell 2 gallons of milk during the Livestock Auction on Thursday. The first gallon will be sold one time with proceeds going to the exhibitor. The second gallon proceeds will go to the Dairy Fund with no limit on the times it can be sold.**

DAIRY DEPARTMENT SPECIAL AWARDS

Outstanding Junior Dairy Herdperson – A special dairy award is to be presented annually to a Kent County Dairy exhibitor 15 years old or younger for dedication in the Dairy project, and exemplifying outstanding effort in school, church, community and agriculture activities throughout the year.

Outstanding Senior Dairy Herdperson – A special dairy award is to be presented annually to a Kent County Dairy exhibitor of allowed showing age, during the calendar year for dedication in the Dairy project, and exemplifying outstanding effort in school, church, community and agriculture activities throughout the year.

Fred Oesch Jr. Memorial Showmanship Award -Presented to the first-place entry in the Novice Dairy Showmanship Class.

2024 Gallon of Milk Buyers

Kent County Farm Bureau Swisslane Farms Stedfast Construction Inc. Caledonia Farmers Elevator Farm Bureau Insurance Mark Johnson Agency Fullscope Ag Services Tom & Michelle Oesch Trademark Electric Mike & Diane Van Laan Walnutdale Farms AIS Ag Solutions Burgess Concrete Construction Lee Christopher Churchill Mortgage - Tom Boorsma	Tina & Brian Dalley Finn Farms Flat River Therapy Grand Properties LLC Greenmark - Hastings Hillcrest Farms Dave Hildenbrand Betty Hyde Crop Insurance Aaron Lamoreaux Family Lamoreaux Auction & Appraisal Lamoreaux Farm Market Bud & Jackie Letts Lisa Posthumus Lyons - County Clerk Meijer Grand Rapids Stores & Corporation	Michigan Milk Producers Association Mitchell & Sarah Miller Foundation Jean Nugent Nuvu Fuels Michigan Fred & Donna Oesch Matt & Shelli Oesch Tom & Annie Oesch Dan & Paula Olney Seifville Farms Snarski Family Southkent Veterinary Hospital Twisted Pines Livestock Wee-land Farms LLC Wolverine Construction
--	--	---

DEPARTMENT 2B - YOUTH MARKET DAIRY

Superintendent: Renee McCauley 616-283-6411 tumbleweedcows@comcast.net
Assistant Market Superintendent: Darcy Snarski 616-437-0773 snarskifive@gmail.com

FAIR WEEK

Exhibitor Meeting at 6 pm on Sunday.

Weigh In Time will follow meeting at approximately 6:30 pm

Market Dairy Show will be **Wednesday 2pm** with market classes.

Showmanship will begin immediately following the market classes.

Release Time: **6pm Saturday** end of fair

Fair Exhibit Requirements:

1. Final determination of eligibility to show and sell is at the superintendent's discretion.
2. Dairy feeder calves have a suggested weight range of 350 to 750 lbs. Minimum weight may be influenced by the breed of the animal.
3. Dairy feeder calves weighing more than 750 lbs. may sell their feeder calf but will sell at the maximum weight allowed of 750 lbs.
Dairy feeder calves weighing over 750 lbs. will not be eligible for Grand or Reserve.-
4. Dairy Feeder calves will not be individually sold during the live KCYF Livestock Auction.
All dairy feeder calves sold will be listed on a bid board the week of fair and offered for buyers to be directly purchased for a higher individual floor price.
5. Exhibitors selling their dairy feeder calves will be paid a guaranteed market floor price.
6. The Dairy Market Department will collectively solicit funds to go towards each dairy feeder calf pound sold.
This will include introducing all dairy feeder exhibitors and a callout to bidders during the live auction.
7. Exhibitors are encouraged to connect with potential supporters to increase their market price via multiple bonus bids on their dairy feeder project.

Note: Rule #3 under Livestock Auction: **Each exhibitor may sell one bovine.**

SECTION 11 – MARKET DAIRY ANIMALS

Class #	Description	Entry Fee
250	Market Dairy Steer - must be declared by Feb. 1	\$5.00
251	Market Dairy Feeder Calf -	\$5.00

SECTION 13 - MARKET DAIRY SHOWMANSHIP

Class #	Description
260	Senior Showmanship, 17-21
261	Intermediate Showmanship, 13-16
262	Junior Showmanship 10-12
263	Novice Showmanship, 7-9
264	Explorer Showmanship & Record Book, 5-9

SECTION 14 - MARKET DAIRY RECORD BOOK/ Forecasted Market Dairy Feeder Report

Both available at www.kcyf.org Fair Exhibitors Departments, all department forms

Class #	Description
270	Market Dairy Steer Report - Due June 15th
271	Market Dairy Feeder Report - Due June 15th

2024 Feeder Pool Buyers

Kent County Farm Bureau Friends of Dairy Market GreenStone Farm Credit Services (Grand Rapids) Mattson Financial Services County Line Farms D & D Trucking Dean's Excavating Inc. Farm Bureau Insurance - Mark Johnson Agency Flat River Therapy Fullscope Ag Services Lake Odessa Livestock Meijer Grand Rapids Stores & Corporate	Meyer Mfg. Corp. Robert Hardy & Sons Terra Verde Landscape Timpson Transport Walnut Grove Excavating Swiss Lane Farms Alto Oil Co. Inc. Brendan and Laura Albert Drown Family Greenmark Equipment - Hastings ISR Angle Swimmers - Michelle Davis Jean Nugent Mitchell and Sarah Miller Foundation Nuvu Fuels Michigan Tom & Michelle Oesch	Tumbleweed Dairy LLC AIS Ag Solutions Burnips Equipment Company Dave Hildenbrand Evan and Tricia Thomas Fairs.com Impact Wesleyan Church of Lowell Lamoreaux Auction & Appraisal Superior Groundcover Inc. TC Hereford Ted and Pat Mager Tina and Brian Dalley Tom & Annie Oesch Wolverine Construction
---	--	--

DEPARTMENT 4 – YOUTH BEEF

Co Superintendent: Josh Beukema 616-644-0761

beukema2@msu.edu

Co Superintendent: Jenna Young 616-799-0468

jalcumbrack9876@gmail.com

DEADLINES

**Beef Steer Declaration Dates for DNA Collection and Weigh-in of all Market Animals:
in November or the Friday and Saturday at the Michigan Winter Classic preceding year of fair.**

Mandatory Beef Meeting to be determined at the Winter Beef Development Meeting.

DNA fee of \$20.00 due (in addition to fair entry fees) when sample is taken.

(No declarations will be accepted after their due date)

FAIR WEEK

All animals coming in will have a health and RFID tag check.

5pm to 7pm on Saturday

Heifer and Feeder check in - **Sunday 10am to 12 noon**

Steer check in and Ultrasound - **Sunday 10am to 2pm**

BEEF SHOW ORDER

Beef Showmanship – **Wednesday, 8:00am**

Followed by Breeding Stock, Feeder Steers and then Market Steers

Beef Explorer Showmanship – During show

Release Time: 6:00PM Saturday end of fair

Fair Exhibit Requirements:

1. Health Requirements:

- All cattle must be dehorned, horns may be no longer than 1" in length.
- Cattle infected with a communicable disease may not be brought onto the fairgrounds. To meet the health standards required to show, cattle need to be free of illness including but not limited to:
 1. Clinical signs of respiratory disease (watery eyes, nasal discharge, elevated temperature, excessive slobbering)
 2. Active ringworm and/or warts
 3. Identifiable external parasites
- Evidence of surgical, conformational, or unethical alterations will result in both the animal and the exhibitor to be disqualified from the fair.
- Castration procedure must be fully healed with no signs of swelling, discharge, or decay.
- Cattle not meeting these standards are to be removed from the fairgrounds immediately following notification to the exhibitor and/or parents/guardian.

2. All cattle must be unloaded from the designated unloading zone. Cattle may not be unloaded without being checked by Kent County Youth Fair personnel.
3. Verification of the age and breed of the breeding animal must be available at check-in time. Breeding cattle must be tattooed according to their registration papers. Market animals must be signed up in their breed.
4. Finished Market Steers and finished Market Heifers must be born on or after January 1st of the previous fair year. **Effective for the 2026 fair year.**
5. A sale screening committee (Beef and Livestock Superintendent) will review the finish of all sale animals to determine eligibility. The screening process includes, but is not limited to, the use of ultra-sounding equipment for Market Steer sales at Livestock Sale. **A Market Steer with fewer than 0.16 inches of back fat will be sold as a Prospect Steer at the Livestock Sale following Market Steers.** An exhibitor may show and sell a prospect steer once. Exhibitors that bring a steer with less than 0.16 inches of back fat for two consecutive years will not be allowed to sell a steer at the Livestock Sale the second year.
6. Cattle must be shown by the exhibitor to whom they are declared. Cattle may also be shown by an immediate family member, that must first be approved by the beef superintendent.
7. Explorers must use an animal already on the grounds.
8. Feeder Steers must be born between January 1 and May 14 of the current Fair year. All steers must be castrated and dehorned. Steer must weigh over 300 lbs. to be sold.
9. All cattle, upon arrival at Fair, are to be washed and kept clean.
10. Stalls will be cleaned daily. If stalls are not cleaned daily, cattle may be sent home and not sold.

11. All cattle must be broke and manageable, so not to disrupt the class, and not endanger any persons or animals through the entire time at fair. **Remember no show, no sale. (At superintendent's discretion.)**
12. The Beef Barn is to be COMPLETELY set-up on Saturday before Fair. Not on Sunday or Monday.
13. All calves exhibited in the cow-calf class must be born between January 1st and May 14th of the current fair year. If the calf is born before May 15th, they will be eligible to show in their respective class.
14. Only one beef project may be sold in the Livestock Sale, either one (1) Market Steer or one (1) Feeder Steer or one (1) Market Heifer.
15. Beef Superintendent or person appointed by the superintendent has the option of checking cattle at the exhibitor's premises.
16. All beef animals in beef barn are required to stall in tie outs overnight (9pm – 9 am) unless severe weather conditions prohibit outdoor stalling which is to be determined by the beef superintendent.
17. If DNA results do not match, the exhibitor of that animal will incur a 1 year suspension from the Beef Department and forfeit 50% of their Beef Department sale check to the Livestock Auction Committee.
18. The only tags left in the ears of market animals at load out will be the RFID tags and KCYF sale tags.
19. Market Heifers will be subject to a pregnancy check at the discretion of the beef superintendent or within 30 days of fair.
20. All market animals are to have a DNA hair sample collected by superintendent, or someone appointed by the superintendent, by January 1st of the current fair year.
21. Beef record books, YQCA, BQA certification or participation in an approved educational meeting are accepted requirements for the livestock auction.

Note: Rule #3 under Livestock Auction: **Each exhibitor may sell one bovine.**

SECTION 01 - MARKET BEEF ANIMALS

Class #	Description	Entry Fee
410	Feeder Calf - all breeds	\$5.00
	Market Beef Animals	\$5.00

Class #	Description	Class #	Description
400	Angus	406	Crossbred
401	Hereford	407	Shorthorn Plus
402	Shorthorn	408	Any Other Registered Breed
403	Maine-Anjou	409	Maintainer Breed
404	Simmental	410	Market Heifer
405	Chianina		

SECTION 02 - BEEF BREEDING CATTLE – All breeding cattle must be registered in the name of the youth exhibitor or the youth's family.

Class #	Description	Class #	Description
400	Angus	405	Chianina
401	Hereford	406	Crossbred
402	Shorthorn	407	Shorthorn Plus
403	Maine-Anjou	408	Any Other Registered Breed
404	Simmental	409	Maintainer Breed

SECTION 03 - BEEF SHOWMANSHIP

All exhibitors are expected to participate with one beef animal.

Exhibitors are expected to show their own animal unless approved by the Beef Superintendent.

Class #	Description
439	Senior Showmanship, 17-21
440	Intermediate Showmanship, 13-16
441	Junior Showmanship, 10-12
442	Novice Showmanship, 7-9
443	Explorer Showmanship, 5-9

SECTION 04 - MARKET BEEF EDUCATION - Livestock Record Books are due Monday at 6:00 PM to the Beef Superintendent.

Youth showing a market animal must complete one of the four requirements listed below.

Class #	Description
444	Market Steer Record Book
455	Feeder Calf Record Book
456	BQA Certification
457	Attendance at Beef Educational Meeting

SECTION 06 – BEEF CLUB ENTRIES

Class #	Description
461	Beef Club Herdsmanship -Limited to clubs who have 1 or more members in this project.

DEPARTMENT 6 – YOUTH SHEEP

Superintendent: Kara Schut 517-881-4091 kschut@aol.com
Assistant Superintendent: Kendra Lloyd 616-685-9446 kendralloyd123@gmail.com

FAIR WEEK

Check In: **Saturday- 6:00 p.m. to 7:00 p.m., Sunday- 2 p.m. to 4:00 p.m.**

Weigh-in and Screening of all sale animals – **Sunday, 5:00 pm**

SHOW DAY

Show time: **Tuesday, 4:00 p.m.**

Order of classes: Breeding Stock, Tykes and Tots, Explorer Showmanship, Market Lambs, all other Showmanship.

Breeding stock & Explorer animals may be brought in for the day of the show.

Release Time: **6PM Saturday** end of fair

Fair Exhibit Requirements:

1. Minimum sale weight of 90 pounds is required to sell.
2. All market lambs to be sold in sale will be inspected and approved by the sheep superintendent and the sale committee.
3. All sheep must be at least rough sheared within 2 weeks prior to fair and an exhibitor may be required to re-shear by the superintendent prior to check in. Sheep must also be washed and cleaned before being brought to the fair.
4. Market lambs must be castrated at least two months prior to fair.
5. Breeder Flock (shown by one exhibitor) and Club Flock (shown by 3 or more members) shall consist of 4 animals; one aged ewe, or one yearling ewe, two ewe lamb, and one ram lamb. Club Flock can be mixed breeds. **Entries must be under the farm name or club in FairEntry.**
6. All sheep must be owned by exhibitor by June 15th of the current Fair year. For leased breeding stock, please see animal lease rules.
7. Record books or approved educational experience (first Sunday of fair) will be required for all market lambs. All books are due Monday at noon to the superintendent.
8. Up to four (4) market lambs may be entered with **full official scrapie ID**. Each exhibitor can exhibit 2 market lambs (1 ewe & 1 wether **or** 2 wethers **or** 2 ewes) at fair.
9. Absolutely no tarps will be allowed to cover tack or animals on the sides of the tent.
10. Animals exhibiting prolonged prolapse will be sent home.
11. Ewes can be shown in both market and breeding BUT MUST be entered in both by entry deadline.
12. Bred and Owned requirement: Exhibitor or immediate family must be owner of dam at time of conception.

SECTION 01 - MARKET SHEEP - All lambs must be slick shorn.

Class #	Description	Entry Fee
600	Market Wether	\$5.00
601	Market Ewe	\$5.00
602	Bred and Owned Market Wether	\$5.00
602	Bred and Owned Market Ewe	\$5.00

SECTION 02 - BREEDING SHEEP

Class #	Description	Entry Fee
6001	Ram lamb	\$5.00
6002	Ewe, two years old or older	\$5.00
6003	Ewe, yearling	\$5.00
6004	Ewe, lamb	\$5.00

Class #	Description	Class #	Description
600	Suffolk	603	Any Other Meat Breed
601	Dorset	604	Any Other Wool Breed
602	Hampshire	605	Crossbred

SECTION 03 - SHEEP SHOWMANSHIP

640	Senior Showmanship, 17-21
641	Intermediate Showmanship, 13-16
642	Junior Showmanship, 10-12
643	Novice Showmanship, 5-9
644	Explorer Showmanship & Record Book, 5-9
645	Tots & Tykes Class, 4 & under** <ol style="list-style-type: none"> 1. Participant must be able to walk. 2. Participant must be with parent or guardian through-out time in ring. 3. Must fill out waiver before participation (Available on website in department forms).

SECTION 04 - MARKET LAMB EDUCATION

Livestock Record Books are due Monday at noon to the Sheep Superintendent. Educational event must be completed by first Sunday of fair. Youth showing a market animal must complete one of the two requirements.

Class #	Description
649	Market Record Book
650	Superintendent approved educational event

SECTION 05 - SHEEP GROUP CLASSES - ONE EXHIBITOR

Class #	Description
651	Breeder Flock (See requirement #5)

SECTION 13 - SHEEP CLUB EXHIBITS - Enter online under Club Name only

Class #	Description
652	Sheep Club Flock (see requirement #5)
653	Sheep Club Herdsmanship

DEPARTMENT 8 – YOUTH GOATS

Superintendent: Autumn Skinner 989-506-1348 autumnskinner2399@gmail.com
 Assistant Superintendent: Paige Vanderwey 616-916-2139 paige.vanderwey@gmail.com

Fair Week Schedule

All goats will go through a health check prior to admittance to the fair.

Check in **Sunday 2 to 6pm.**

Saturday check in accommodations will be made upon request.

Weigh-in and tagging of market animals will be

Sunday immediately after Sheep weigh in that begins at 5pm.

Bring completed Check In Sheet to check in. It can be found on fair website.

Team Fitting is **Sunday at 7:30 pm.**

Goat Exhibitor meeting is directly after team fitting approximately 8:15 pm.

Goat Showmanship is **Tuesday at 9am** with breed and market classes to follow.

Trail & Costume class is **Thursday at 3pm.** in the show tent.

Milking Contest is **Friday at 9am** in the Goat area

.Release Time: 6:00PM Saturday end of fair

Fair Exhibit Requirement:

1. Kids born after June 1 must be pre-registered.
2. No bucks or cript orchids (wethers displaying one testicle) are allowed at Fair.
2. No does shall be brought to the fair that are due to kid within a month of fair week.
3. Dairy goats or Dairy Market Wethers with horns will not be permitted.
4. Kids under 8 weeks old are not allowed in pens by themselves.
5. All exhibitors, market and breed classes, must participate in at least one provided educational event.
6. Market goats (wether or doe for meat type; wether for dairy type (must be of a dairy breed)) will be weighed in and screened for the sale on Sunday immediately following check in. Only goats under a year old, not cutting yearling teeth and a minimum of 50 pounds will be sold at the livestock auction. If showing a market doe, it must be of a meat breed. **An exhibitor may show two but sell one market goat. Exhibitor must be present while weigh-in takes place.**
7. No pen space is available for Explorer goats coming in for the day.
8. All goats must have proper ID according to the USDA and state guidelines. Tattoo's must be legible with registration paper, and scrapie tag must be properly applied on all non registered goats. Microchips are only acceptable per USDA guidelines.
9. A copy (no originals) of registration papers and/or chipped goat registration papers are required and due at check-in for superintendent to keep.
10. Breed Showmanship Attire – It is recommended that exhibitors showing dairy breed goats wear white pants and a white collared shirt. It will, however, be considered acceptable for youth exhibitors to wear black pants and a white shirt for dairy and pygmy.
11. Market Showmanship Attire - Jeans and a nice shirt are acceptable for Market Showmanship as well as Boer breeding and Market classes.
12. Pet wether class is defined as the only goat being shown by the exhibitor or is the exhibitor's showmanship goat.
13. Body clipping will be permitted at the fair. Hair must be picked up by the exhibitor. The exception is goats designated for fitting contest.
14. No additional barriers or dividers are allowed in the pens. No tarps will be allowed to cover tack or animals.
15. Goats must be fed from hanging hay feeder or crate as there are **no net or bag hay feeders allowed in pens.**
16. Bred and Owned - Exhibitor or immediate family must be the owner of the dam at time of conception.
17. Club Herd - Consist of 4 animals shown by four different exhibitors.

SECTION 01 – MARKET GOATS

Class #	Description	Entry Fee
800	Market Goat – meat breed type	\$5.00
801	Market Dairy Wether Goat – dairy breed type	\$5.00

SECTION 02 – BREEDING & EXHIBITION GOATS

802	DAIRY GOAT BREEDS – Alpine, Nubian, LaMancha, Saanen, Toggenburg, Nigerian Dwarf or a mixed breed that resembles one of the dairy breeds, especially if it is a milking doe
803	ANY OTHER GOAT BREEDS – Pygmy, Boer/Meat type and fiber breeds will be shown in this class and each judged according to current breed standards

Sublot #	Description	Entry Fee
8000	Junior Doe Kid born after 4/1 of current year	\$5.00
8001	Senior Doe Kid born 1/1 – 3/31 of current year	\$5.00
8002	Dry Yearling	\$5.00
8003	Yearling in Milk born before 1/1 of previous year but not yet 2 years old	\$5.00
8004	2 year old Milking or Dry	\$5.00
8005	3 year old Milking or Dry	\$5.00
8006	4 year old Milking or Dry	\$5.00
8007	5 year old and older Milking or Dry	\$5.00
8008	Pet Wether	\$5.00

SECTION 03 - BREEDING GOAT SHOWMANSHIP

(All exhibitors are required to exhibit in either breeding showmanship or market showmanship and may show in both.)

Class #	Description
810	Senior Showmanship, 17-21
811	Intermediate Showmanship, 13-16
812	Junior Showmanship, 10-12
813	Novice Showmanship, 5-9
814	Explorer Showmanship & Record Book, 5-9

SECTION 04 - MARKET GOAT SHOWMANSHIP Exhibitors with meat breed goats are eligible for Market Goat Showmanship.

Class #	Description
820	Senior Market Showmanship, 17-21
821	Intermediate Market Showmanship, 13-16
822	Junior Market Showmanship, 10-12
823	Novice Market Showmanship, 5-9
824	Explorer Showmanship & Record Book, 5-9

SECTION 05 - GOAT EDUCATION - Each exhibitor must participate in at least one educational event provided.

Class #	Description
828	Educational Contest (Online quiz for each age division with general goat show and health questions. Prizes awarded at the fair.)
829	Breeding & Exhibition Goat Educational Poster
830	Market Goat Expense Book
831	Superintendent Approved Educational Event

SECTION 06 – GROUP CLASSES

Class #	Description
835	Dam and Daughter (any age) – each animal must also be entered individually by the same exhibitor
836	Market Dam and Daughter - Goat exhibited must be a meat breed doe with her doeling. Each animal must also be entered individually by the same exhibitor
837	Best Udder (dairy breeds only)
838	Bred and Owned
839	Club Herd

SECTION 07 - GOAT FUN CLASSES

Milking Contest Learning Objective: To demonstrate competency of proper milking technique and expose and educate the public in a casual question and answer format. In general, when milking a dairy goat, it is best to empty the udder quickly. This event is conducted in a fun and competitive atmosphere.

Goat Cart Requirements:

1. Exhibitor must show own animal and must be able to control the animal with reins.
2. Goats with horns and wethers will be permitted in driving classes.
3. No bucks allowed.

Club Team Fitting Requirements:

One team up to 4 members per club only. Smaller clubs may combine members, but premium will be paid to only one club. (Combined clubs should enter online under one club). Each team will work together for 40 minutes to fit a goat for show. The team will be responsible to bring their own fitting equipment, set up their stands & equipment in the arena and tear down after event. This is a judged event.

Class #	Description	Class #	Description
850	Trail/Obstacle Course	853	Single goat cart - driving
851	Costume no more than 3 members per entry	854	Double goat cart -driving
852	Milking Contest	855	Team Fitting (2-4 member team)
860	Tots & Tykes Class, 4 & under** <ol style="list-style-type: none"> 1. Participant must be able to walk. 2. Participant must be with parent or guardian through-out time in ring. 3. Must fill out waiver before participation (Available on website in department forms) 		

DEPARTMENT 10 – YOUTH SWINE

Superintendent: Heather Everett 269-838-1668 hcanfield@hotmail.com

Check-In Times: Friday 5 to 8pm and Saturday 7am – 12 noon.

SWINE SHOW

Swine Show: Monday 8am

Show Order: Showmanship, Market Hog Classes, Championship Drive

Showmanship Order: Senior, Intermediate, Junior, Novice, Explorers

Release Time: Processed Market Animals may leave as early as 6pm Saturday end of fair.

Fair Exhibit Requirements:

1. Exhibitors must declare what animal will sell at time of check-in.
2. Check-in times will be strictly adhered to, arrivals after 8 pm on Friday or noon on Saturday will be turned away unless the superintendent has received advance notice of a delay.
3. The declared sale animal is required to stay the entire week of fair. Exhibitor's 2nd hog must go home Monday after the show.
4. Swine market show will be divided by breed or crossbred. Breed borrows and gilts will be shown together. Crossbred borrows and gilts will be shown in separate classes.
5. For breed hogs you must present registration papers at the scale when weighing in. If you do not have registration papers the hog will be subject to classification by superintendent or staff appointed to classify. If the hog does not meet breed classification it will show as a crossbred.
6. Must have 5 hogs of a specific breed to form a class. If a breed has less than 5 hogs they will show in an AOB class.
7. All swine exhibitors must participate in YQCA certification or participation in an approved educational meeting to meet requirements for the livestock auction.
8. All hogs MUST have a State ID 840 number.
9. All hogs will be declared with the 840 or NUES# by June 15th prior to fair. If available, must add ear notches.
10. Each exhibitor may tag up to 4 pigs. Family members may share all tag numbers within their family (housed in the same location). Clubs who house their hogs at the same farm must have designated numbers for each family. If a tag is lost, it must be reported to the superintendent immediately so that the hog can be retagged and a new number recorded. **No hog will be weighed without proper identification.**
11. Market hogs must weigh 225 - 300 lbs. All hogs will only be weighed once before they are penned. All hogs that do not make weight will go home immediately. All hogs and ear tags must be clean before unloading. A sale screening committee will review all sale animals to determine eligibility.
12. Any hog with signs of a hernia or rupture cannot be exhibited.
13. Exhibitor will be responsible for being able to drive their own hogs.
14. If none of the exhibitor's hogs make weight, the exhibitor can participate in showmanship by using a sibling's animal or a hog selected by the superintendent if a sibling's animal is not available. Showmanship participation must be declared at weigh-in.
15. All swine will be bedded with bagged shavings only. Pens will be stripped and bedded with fresh shavings by 9:00 am daily. Failure to clean your pen and feed and water your animal the entire week will result in a \$50.00 fee after one warning from the superintendent.
16. Exhibitor must use a manufactured feed pan. Feed pans cannot be left unattended. (Exception granted for hanging feed pans.)
17. Exhibitor may show two market hogs: 1 Barrow & 1 Gilt, or 2 Barrows, or 2 Gilts.
18. Show will be broken down into light, medium and heavyweight divisions for both Barrows and Gilts. The number of classes will be determined after weigh-in is completed.
17. All hogs must have a minimum hair length of ½ inch over the entire body except for the head and tail.
18. The swine influenza vaccination is strongly recommended.

SECTION 01 - MARKET HOGS -

Class #	Description	Entry Fee
1000	A O B	\$5.00
1001	Berkshire	\$5.00
1002	Chester White	\$5.00

1003	Duroc	\$5.00
1004	Hampshire	\$5.00
1005	Hereford	\$5.00
1006	Landrace	\$5.00
1007	Poland China	\$5.00
1008	Spot	\$5.00
1009	Tamworth	\$5.00
1010	Yorkshire	\$5.00
1011	Cross Borrow	\$5.00
1012	Cross Gilt	\$5.00

**REPLACEMENT MARKET HOGS - Choose the correct Replacement Class in Fairentry for your breed.
Class numbers 1020 - 1032**

SECTION 03 - SWINE SHOWMANSHIP

Class #	Description
1035	Senior Showmanship, 17-21
1036	Intermediate Showmanship, 13-16
1037	Junior Showmanship, 10-12
1038	Novice Showmanship, 5-9
1039	Explorer Showmanship & Record Book, 5-9

SECTION 04 - MARKET HOG EDUCATION

Class #	Description
1040	Record Book
1041	YQCA Certification
1042	Superintendent Approved Educational Meeting

DEPARTMENT 12- POULTRY

Superintendent: **Mary Crosby** 616-292-9006 marycrosby412@gmail.com
 Assistant Superintendent: **Shelly Johnson** 616-970-6619 sheilamj99@yahoo.com

FAIR WEEK

Poultry Exhibition Showmanship Record Books are due **Tuesday, July 15th** to the fair office.

Check In: Pullorum testing, Health Evaluation & Weigh-in of all Market birds will take place:

Saturday from 10-1pm and 2-5 pm and Sunday 2-5pm.

Market photos - **Monday of fair 10am**

Market Record Books due **Monday of fair by 5 pm** to the superintendent.

Poultry Shows:

All Market classes - Monday 6:00 pm

Showmanship and Breed classes - **Wednesday, 8:30 a.m.**

Release Time: **8:00PM** Saturday end of fair

Fair Exhibit Requirements:

1. No unworthy, undersized or immature specimens will be awarded regardless of competition. The American Poultry Association Standard of Perfection (its qualifications and defects) will govern the judging in the department. Standard disqualification eliminates an entry. Standard defects cut the value of the entry. **Exhibition class birds must be purebred.**
2. All Poultry must be Pullorum tested upon arrival at the Fair. Members must be present to handle their own poultry at testing time. (Pigeons, doves and waterfowl are excluded from pullorum testing.) No birds may be placed in cages until they have been tested for Pullorum. Birds exempt from Pullorum testing must go through a health check. Flock Test #92 Form with a testing date of July 1 or later of the current year will be accepted. **A Pullorum testing donation of .50 cents per bird is appreciated.**
3. Only healthy birds are allowed to be exhibited. Birds should be mites and lice free and **must be washed and dried at check in. Only clean birds will be accepted. Dirty birds will be rejected from the show.**
4. Only birds considered market ready will be permitted to be sold at auction. The selection may be made at the discretion of the judge and superintendent. Minimum market weights for chickens WILL be enforced. Turkeys are expected to meet the suggested minimum weight but final determination will be at the discretion of the judge and superintendent. Market birds will be weighed at check in. Exhibitors are limited to entering and selling two market poultry projects that are not in the same class. Based on buyer's wishes, exhibitor is responsible for arranging pick up, delivery and/or processing of market birds.
5. **Market pens must be determined and tagged per exhibitor prior to fair check in.**
6. When exhibiting eggs, entries shall consist of 12 eggs, all of which must be the same color (brown, white, or colored). Eggs are due ½ hour before the start of the Poultry Show.
7. No leghorns or egg breeds accepted as meat birds.
8. Poultry Exhibition Showmanship Record Book is required by ALL Poultry exhibitors and are due **Monday July 14th** to the fair office.
9. A Market Record Book for Meat Production Poultry is required for section 1. Exhibitors entering two market poultry projects must complete pages 2 and 3 of the record book for each project. This Record Book is due the **Monday of Fair by 5:00pm.**

SECTION 01 – MARKET POULTRY – (may choose only two of the market poultry classes) A,B,C judging with 1st-5th placing.

Class #	Description	Entry Fee
1200	Market Chicken (3) - minimum of 4.5 pounds each	\$5.00
1201	Market Chicken (3) - minimum of 4.5 pounds each	\$5.00
1202	Market Turkey – suggested minimum weight of 20 lbs. for tom and 16 lbs. for hen	\$5.00
1203	Market Ducks (2) must weigh at least 5.5 lbs each. live weight; gender not required	\$5.00
1204	Market Goose – must weigh at least 9 lbs. live weight; can be goose or gander	\$5.00

SECTION 02 – EXHIBITION BIRDS

Class #	Description	Entry Fee
1210	Standard Bird	\$5.00
1211	Bantam Bird	\$5.00

Sublot #	Description
12001	Hen – over 1 year of age
12002	Pullet – under 1 year of age
12003	Rooster – over 1 year of age
12004	Cockerel – under 1 year of age
12005	Pair of Birds – must be same breed

1212	Pen of 3 Egg Production Birds – must be same breed	\$5.00
------	--	--------

Sublot #	Description
12001	Hen – over 1 year of age
12002	Pullet – under 1 year of age

Class #	Description	Entry Fee
1213	Tom Breeding Turkey – hatched before 1/1 of current year	\$5.00
1214	Hen Breeding Turkey - hatched before 1/1 of current fair year	\$5.00
1215	Bantam Pair - must be male and female of same variety	\$5.00
1216	Bantam Female Duck	\$5.00
1217	Bantam Drake	\$5.00
1218	Ducks Pair – must be male and female pair of same breed	\$5.00
1220	Female Duck	\$5.00
1221	Drake	\$5.00
1222	Geese Pair– must be male and female pair of same breed	\$5.00
1223	Breeding Goose	\$5.00
1224	Breeding Gander	\$5.00
1225	Guinea Fowl– must be male and female pair of same breed	\$5.00

1226	Pigeons – must be male and female pair of same breed	\$5.00
1227	Quail – must be male and female pair of same breed	\$5.00
1228	Pheasants – must be male and female pair of same breed	\$5.00
1229	Peacock or any other exotic bird	\$5.00

SECTION 03 - POULTRY SHOWMANSHIP

Class #	Description
1250	Senior Showmanship, 17-21
1251	Intermediate Showmanship, 13-16
1252	Junior Showmanship, 10-12
1253	Novice Showmanship, 5-9
1254	Explorer Showmanship & Record Book, 5-9

SECTION 04 - POULTRY EDUCATION

Class #	Description
1275	Market Poultry Record Book (required by all poultry market exhibitors)
1276	Exhibition Poultry (required by all poultry exhibitors)

SECTION 08 - EGGS

Class #	Description	Entry Fee
1280	One Dozen Eggs - White, Colored or Brown	\$.50

DEPARTMENT 14 – YOUTH RABBITS & CAVIES

Superintendent: **Andrea Perez** **419-350-8315** perez.andrea@att.net
Assistant Superintendent: **Cathy Nitschke** **616-262-7503** camnitschke@comcast.net

Record Books due: **June 30th** to the KCYF fair office **Except for market projects and explorers*
 Check In: **Sunday 1 - 4pm** Rabbit/Cavy tent **Market Project Record Books due at check-in*

Market pictures: **Monday 10am.**

Rabbit Show

Rabbit Showmanship: **Monday 12 noon**

Rabbit Breed & Market Judging: Monday following Showmanship

Rabbit and Cavy Individual Quiz Bowl: **Tuesday 5pm**

Explorer Showmanship/Fun Classes: **Thursday at 11 am** **Explorer Record Books due at time of show.*

Rabbit and Cavy Costume: **Thursday 1pm**

Rabbit Agility: **Friday 10am**

Release Time: **7pm Saturday** end of fair

Rabbit Fair Exhibit Requirements:

1. Each exhibitor may show up to five rabbits in Breed Judging. If exhibitor also participates in Progeny, six rabbits may be entered in the fair but only five may be shown in Breed Judging. At least one of the Progeny animals must be shown in Breed Judging. In addition to these classes, an exhibitor may also participate in up to two of the following: Meat Pen of Three, Fryer, Roaster, and/or Stewer. All rabbits will be judged according to the current ARBA Standard of Perfection guidelines with the exception of Pet Class animals which will be judged on condition only. Official Show Rules can be found at www.ARBA.net. Order of breeds & market classes for judging will be posted 30 minutes before the start of show.
2. Pet Class is intended for exhibitors owning only one rabbit. Mixed-breed rabbits, rabbits with disqualifications, and rabbits of an unrecognized variety may be shown in this class. Rabbits that win the Pet Class are not eligible to compete in Best 4-Class, Best 6-Class, or Best In Show.
3. Offspring pedigree required for Progeny Class and must be presented at the time of show.
4. Meat Pens of Three, Fryers, Roasters and Stewers will be weighed at check-in. This will be the weight used for the livestock sale on Thursday regardless of the outcome of the market class judging/weighing on Monday night. Meat Pens and Fryers must be less than 10 weeks of age (70 days), weigh between 3.5 and 5.5 pounds each and be free from all disqualifications for market class animals according to the current ARBA Standard of Perfection guidelines. Roaster must be less than 6 months of age, weigh between 5.5 and 9 pounds and be free from all market class disqualifications. Stewers must be over 6 months of age, weigh a minimum of 8 pounds with no maximum weight listed and be free from all disqualifications. Any market rabbit not meeting this standard will not be sold in the auction. Exhibitor must take possession of a purchased market animal no later than 14 days prior to check-in. Based on buyer's wishes, exhibitor is responsible for arranging pick up, delivery and/or processing of market rabbits. ***Market Project Record Books are required in addition to the standard Rabbit Record Book.**
5. Rabbits must be at least three months of age by the day of check-in with the exception of Meat Pens, Roasters and Fryers. With the exception of market rabbits, exhibitors must take possession of their project animal(s) no later than June 15 of the current year.
6. All rabbits must have a permanent tattoo in the left ear in accordance with ARBA guidelines at the time of check-in. No tattooing will be allowed at fair. Exhibitors/clubs that need assistance with tattooing should contact the superintendent.
7. Carrying cages must be removed from the barn and show areas by 10:00 pm on the Sunday of check-in.
8. One rabbit per cage, except a Meat Pen of Three. Locks are not allowed on cages. Plastic zip-ties are accepted. Cage assignments will be available at check-in. No advanced assignments will be given.
9. Exhibitors must bring their own water bottles or crocks. Fresh water must be available at all times.
10. Each exhibitor's cage(s) and area beneath must be cleaned daily prior to 10:00am. No animal may leave the building until all waste has been properly disposed of.
11. **Record books are required for all exhibitors and may be found online ONLY at www.kcyf.org.** A late record book (turned in after 5 pm on the last Friday in June) will be subject to sanctions up to, and including, disqualification from Grand and Reserve awards, and Showmanship Sweepstakes. A point deduction may also be taken. No record book = no show. NO EXCEPTIONS!

SECTION 01 - MARKET RABBITS - (May choose up to two of the market rabbit classes.)

Class #	Description	Entry Fee
1400	Meat Pen of Three (May not use as a fryer.)	\$5.00
1401	Market Rabbit	\$5.00
1402	Market Rabbit	\$5.00

SECTION 02 - BREED RABBITS

Class #	Description	Entry Fee
1405	Senior Buck	\$5.00
1406	Senior Doe	\$5.00
1407	Intermediate Buck	\$5.00
1408	Intermediate Doe	\$5.00
1409	Junior Buck	\$5.00
1410	Junior Doe	\$5.00
1411	Progeny - Buck or Doe and one offspring showing improvement over its parents. Offspring must be between 3 & 8 months old. Animals must be entered in individual classes	

Sublot #	Description	Sublot #	Description
14001	AMERICAN FUZZY LOP All Varieties	14013	MINI LOP All Recognized Varieties
14002	CALIFORNIAN	14014	MINI REX All Recognized Varieties
14003	DUTCH All Recognized Varieties	14015	MINI SATIN All Recognized Varieties
14004	ENGLISH LOP All Recognized Varieties	14016	NETHERLAND DWARF All Varieties
14005	FLEMISH GIANT All Recognized Varieties	14017	NEW ZEALAND All Recognized Varieties
14006	FLORIDA WHITE	14018	POLISH All Recognized Varieties
14007	FRENCH LOP All Recognized Varieties	14019	REX All Recognized Varieties
14008	HAVANA All Recognized Varieties	14020	SATIN All Recognized Varieties
14009	HIMALAYAN All Recognized Varieties	14021	SILVER FOX All Recognized Varieties
14010	HOLLAND LOP All Recognized Varieties	14022	4-CLASS Other Recognized Breeds
14011	JERSEY WOOLY All Recognized Varieties	14023	6-CLASS Other Recognized Breeds
14012	LIONHEAD All Recognized Varieties	14024	PET CLASS

SECTION 03 - RABBIT SHOWMANSHIP

Class #	Description
1420	Senior Showmanship, 17-21
1421	Intermediate Showmanship, 13-16
1422	Junior Showmanship, 10-12
1423	Competitive Novice Showmanship, 5-9
1424	Novice Non-Competitive Showmanship & Record Book, 5-9

SECTION 04 - RABBIT EDUCATION

Class #	Description						
1430	Record Book						
	<table><tr><th>Sublot #</th><th>Description</th></tr><tr><td>14031</td><td>Rabbit Project by Exhibitor Age</td></tr><tr><td>14032</td><td>Market Rabbit</td></tr></table>	Sublot #	Description	14031	Rabbit Project by Exhibitor Age	14032	Market Rabbit
Sublot #	Description						
14031	Rabbit Project by Exhibitor Age						
14032	Market Rabbit						

SECTION 05 - RABBIT FUN CLASSES

- Costume is to comply with fair dress codes and be humane to the animal.
- Quiz Bowl will involve a series of 20 questions per heat and is a single-elimination event.

Class #	Description								
1440	Costume								
1441	Individual Rabbit Quiz Bowl and Cavy Quiz Bowl								
1443	Rabbit Hopping								
	<table><tr><th>Sublot #</th><th>Description</th></tr><tr><td>14041</td><td>Novice/Junior (5-12)</td></tr><tr><td>14042</td><td>Intermediate/Senior (13-21)</td></tr><tr><td>14043</td><td>Explorer 5 - 9</td></tr></table>	Sublot #	Description	14041	Novice/Junior (5-12)	14042	Intermediate/Senior (13-21)	14043	Explorer 5 - 9
Sublot #	Description								
14041	Novice/Junior (5-12)								
14042	Intermediate/Senior (13-21)								
14043	Explorer 5 - 9								

CAVY FAIR REQUIREMENTS

Record Books due: **June 28th** to the KCYF fair office

Check In: **Sunday 1 - 4pm** Rabbit/Cavy tent

Cavy Shows

Monday 11am: Showmanship immediately followed by Breed Judging

Rabbit and Cavy Individual Quiz Bowl: **Tuesday 5pm**

Explorer Showmanship/Fun Classes: **Thursday at 11am** *Explorer Record Books due at time of show.

Rabbit and Cavy Costume: **Thursday 1pm**

Cavy Fair Exhibit Requirements:

- Each exhibitor may show up to three cavies in Breed Judging. If an exhibitor also participates in Progeny, four cavies may be entered in the fair but only three may be shown in Breed Judging. At least one of the Progeny animal *must* be shown in Breed Judging. All cavies will be judged according to the current ARBA Standard of Perfection guidelines with the exception of the Pet Class animals that are judged only on condition. If showing a long-haired satin cavy, it must be entered in All Satin Breeds. Order of breeds for judging will be posted 30 minutes prior to show.
- Pet Class is intended for exhibitors *owning only one cavy*. Mixed-breed cavies, cavies with disqualifications, and cavies of an unrecognized variety may be shown in this class. Cavies that win the Pet Class are not eligible to compete in Best In Show or Reserve In Show. Record books and Showmanship are still required.
- Offspring pedigree is required for Progeny Class, but a single-generation pedigree including only sire, dam and offspring is acceptable. Pedigree must be presented at time of showing.
- Cavies must be at least one month of age by the day of check-in. Exhibitor must take possession of project animal(s) no later than June 15 of the current year.
- All cavies must have a permanent ear tag in accordance with ARBA guidelines at the time of check-in. No tagging will be allowed at fair. Exhibitors/clubs that need tagging assistance should contact the superintendent well in advance of the day of check-in.
- Carrying cages must be removed from the barn and show areas by 10:00 pm on the Sunday of check-in.
- One cavy per cage, except for a bonded pair of the same sex. Locks are not allowed on cages. Plastic zip ties are acceptable but may be removed at the superintendent's discretion in case of an emergency.
- Exhibitors must provide their own food and water dishes/bottles. Fresh water must be available to all cavies at all times.
- Record books are required for all exhibitors and may be found online ONLY at www.kcyf.org.** A late record book (turned in after 5 pm on the last Friday of June) will be subject to sanctions up to, and including, disqualification from Grand and Reserve awards, Gold Clover Champion Showmanship and Showmanship Sweepstakes. A point deduction may also be taken. No record book = no show. NO EXCEPTIONS!

SECTION 12 - CAVY BREEDS

Class #	Description	Entry Fee
1451	Senior Boar	\$3.00
1452	Senior Sow	\$3.00
1453	Intermediate Boar	\$3.00
1454	Intermediate Sow	\$3.00
1455	Junior Boar	\$3.00
1456	Junior Sow	\$3.00
1457	Progeny: Boar or Sow and one (1) offspring showing improvement over its parents. Offspring must be between 1 and 6 months old.	

Sublot #	Description	Sublot #	Description
----------	-------------	----------	-------------

14001	ABYSSINIAN All Varieties	14005	WHITE CRESTED All Varieties
14002	AMERICAN All Varieties	14006	ALL LONG-HAIRED BREEDS
14003	CORONET All Varieties	14007	ALL SATIN BREEDS
14004	TEDDY All Varieties	14008	PET CLASS

SECTION 13 - CAVY SHOWMANSHIP

Class #	Description
1460	Senior Showmanship, 17-21
1461	Intermediate Showmanship, 13-16
1462	Junior Showmanship, 10-12
1463	Competitive Novice Showmanship, 5-9
1464	Novice Non-Competitive Showmanship & Record Book, 5-9

SECTION 14 - CAVY EDUCATION

Class #	Description
1475	Cavy Record Book

SECTION 17 - CAVY FUN CLASSES

- Costume is to comply with fair dress codes and be humane to the animal. Prize will be awarded to the most original and creative costume.
- Quiz Bowl will involve a series of 20 questions per heat and is a single-elimination event.

Class #	Description								
1480	Costume								
	<table> <tr> <th>Sublot #</th><th>Description</th></tr> <tr> <td>14041</td><td>Novice/Junior (5-12)</td></tr> <tr> <td>14042</td><td>Intermediate/Senior (13-21)</td></tr> <tr> <td>14043</td><td>Explorer 5 - 9</td></tr> </table>	Sublot #	Description	14041	Novice/Junior (5-12)	14042	Intermediate/Senior (13-21)	14043	Explorer 5 - 9
Sublot #	Description								
14041	Novice/Junior (5-12)								
14042	Intermediate/Senior (13-21)								
14043	Explorer 5 - 9								

DEPARTMENT 16 – YOUTH HORSE

Superintendent: Travis Geerligs 616-262-9449

Check In Sunday 8AM - 6PM

Release Time: 5:00PM Saturday end of fair

Fair Exhibit Requirements:

1. All participants, families, and visitors are expected to follow the Kent County Youth Fair's code of conduct
2. All participants and families are required to comply with all KCYAA Horse Leader Association's By-laws and Guidelines.
 - a. Including meeting attendance, worknights, and fundraisers
3. See KCYAA Horse Leaders Equine Project Requirements and Recommendations for the complete and detailed project guidelines. Visit <https://sites.google.com/view/kentcountyhorseleaders/home> for information. Following is a brief summary of those project guidelines
4. See Michigan 4-H Bulletin 1145 (Revised 2016) for complete show rules and regulations.
https://www.canr.msu.edu/resources/michigan_4_h_horse_pony_project_show_rules_regulations
5. See Michigan 4-H Miniature Horse Show Guidelines 2019 for miniature horse project rules and regulations
6. It is required that all youth complete an age appropriate project book.
 - a. The youth must achieve a minimum score of 70% on the project book.
 - b. Youth scoring less than 70% on the project book will be considered an exhibition youth.
 - c. Exhibition youth are not eligible for premiums, ribbons or awards in this project area.
 - d. Project books will be turned into the appropriate Horse Project committee in July (date to be set in Spring).
7. It is required that all youth complete the KEEP level deemed appropriate by their club leader.
 - a. The youth must achieve a minimum score of 80% on the mounted evaluation pattern.
 - b. The youth must complete all elements of the dismounted evaluation skills.
8. See General Rules for the KCYAA Horse Leaders Kent Equine Education Program (KEEP) for further guidelines. Available at <https://sites.google.com/view/kentcountyhorseleaders/home>
9. It is required each youth (horse, horseless, explorer) submit a completed Project Declaration For or Intent to Declare Form.
 - a. Declaration forms must be turned into the club leader who will turn in all forms, at one time, at the May horse leader's meeting.
 - b. A member's 4-H "showing" age will be determined by their age on January 1 of the current fair year.
 - c. Appropriate fees are due at the June horse leaders' meeting.
10. All exhibitors are required to declare a project animal.
 - a. No other animals will be eligible to participate in the horse show program, including the State 4-H Horse Show.
 - b. See KCYAA Horse Leaders Kent Equine Education Project Requirements for further information regarding ownership, etc.
11. Youth may exhibit up to three project animals per the Kent County 4-H Horse Leaders KEEP program.
 - a. Foals, miniature horses, donkeys, mules, ponies and horses can be exhibited at fair.
 - b. Foals being exhibited must be weaned **before** being brought to the fair.
 - c. No stallions over 8 months of age on the first day of fair will be permitted.
 - d. Equine age is determined as of January 1 of the current fair year.
12. Current year's negative Coggin's test (in accordance with Michigan State Law) is required to exhibit an equine at the fair.
13. The following immunizations are required for all equines attending the Kent County Youth Fair.
a. *Rabies *West Nile *Eastern Encephalomyelitis *Western Encephalomyelitis *Tetanus
14. The following immunizations are strongly recommended for equines attending the Kent County Youth Fair.
a. *Equine Influenza Virus (EIV) *Equine Rhinopneumonitis (Rhino-EVH-1 & Equine Herpesvirus EVH-4)
*Potomac Horse Fever *Strangles
15. All immunizations must have been administered in the current fair year.
 - a. All project equines must submit documented proof of the minimum required immunizations.
 - b. Appropriate documentation may include a copy of administering veterinarian's dated invoice, bill, or certification.
 - c. If the immunizations are owner-administered, documentation must include the following:
 - i. Invoice with serial no. written on by the immunization.
 - ii. Date when immunization was administered.
 - iii. Exhibitor and equine's name must be on invoice.
 - iv. Copy of label/package must be included showing the serial number.
 - d. See <https://sites.google.com/view/kentcountyhorseleaders/home> for additional information on immunization guidelines.
16. Two copies of immunizations and negative Coggin's test must be submitted in July (date to be set in Spring).
 - a. One copy required in the KEEP Project book; second copy given to club leader.
17. Any animal arriving at fair in questionable health must submit to veterinary examination upon request from Horse Leader Executive Committee, Horse Superintendent or appropriate Fair Board Member and may be asked to leave the fairgrounds.
18. All members and visitors are to be out of the barns each night at the closing time of 10:00 pm.
 - a. Only Barn Captains, members of the Grounds and Safety Committee, or Fair Board/Staff will have authorized barn entry after hours.

19. No artificial devices or medical aids are to be used in a class on an equine.
20. Removal of ANY exhibit and/or project(s) equine prior to the published release time and without prior approval from the Horse Superintendent will result in forfeiture of premiums, ribbons and trophies in ALL project areas. See Kent County Youth Fair Early Release Policy.
21. Each club is responsible to clean their own area in the barn including aisleways and stalls at completion of fair; removing all items, trash, debris, bedding and manure.
 - a. The Fair Board has the right to fine a club the amount of premium and cost of clean-up if compliance is not met.
22. Clubs should demonstrate good equine care and cleanliness to the public and provide an opportunity to converse with the public regarding their project and principles.
 - a. Decorations that increase fire hazard will not be allowed.
 - b. Clubs should use teamwork and creativity to decorate their stalls and their section of the barn.
23. Each exhibitor must enter class 1601 online at the FairEntry website. Failure to do so by June 15 of the current year will result in the exhibitor being unable to exhibit at the fair.
24. Each horseless participant must enter class 1602 online at the FairEntry website. Failure to do so by June 15th of the current year will result in the exhibitor being unable to exhibit at the fair.
25. Each Explorer participant must enter class 10034 online at the FairEntry website. Failure to do so by June 15th of the current year will result in the exhibitor being unable to exhibit at the fair.

SECTION 04 - HORSE EDUCATION

Class #	Description	Entry Fee
1601	Horse Project Record Book	
1602	Horseless Participant Record Book	
10034	Explorer Showmanship & Record Book, 5-7	

DEPARTMENT 22 – YOUTH DOG CARE AND TRAINING

Superintendent: **Gail Roderick** **616-723-5682** gailksrp@aol.com
Assistant: **Emma Wikstrom** **616-482-9637** wikstrom2018@gmail.com

- All project dogs must be declared by May 1st by use of a Google Form available on the KCYF Dog Project Google Drive, Department Facebook Page and emailed to all KCYF Dog Club Leaders. A declaration must be submitted each year by May 1st to be eligible to show. Fair entries are due by June 15th through FairEntry.
- A Dog Project notebook, which also includes the "Kent County Dog Project Record Book", is required for all exhibitors, including explorers, and is due **Wednesday July 9th**.
- The mandatory Dog Project Meeting is held on the **third Thursday in July** at the King Memorial Building at 7 pm.
- The Obedience/Rally/Showmanship show will be held on **Friday, July 26th** at Cedar Rock Sportsplex starting at 10 am.
- The Agility show will be held on **Monday, July 29st** starting at 4 pm, location TBA.

FAIR EXHIBIT REQUIREMENTS:

1. For premium schedule 20, exhibitors will be given an A, B or C rating based on what the exhibitor has learned and the performance of the Dog/Handler Team with their Dog Care & Training Project.
2. A minimum of a B rating on the dog project notebook is required to be eligible for awards.
3. Obedience, Rally and Agility must show ABOVE the highest title earned at any registry with the Project Dog. Once the exhibitor receives 3 qualifying scores (thereby earning a title), the exhibitor must advance to the next level or exhibit in the Handler class.
4. Handler classes are for youth who are exhibiting a dog trained and/or shown to that level by someone other than themselves. Additionally, youth who have 3 qualifying scores at any level but are not ready to advance must exhibit in the Handler class. Handler classes are not eligible for Grand and Reserve Champion awards.
5. Project Dogs that have successfully passed a CGC test are allowed on the fairgrounds, excluding all livestock barns and arenas. Dogs must wear their identifying red bandana while on the fairgrounds.
6. The first year that a dog is chosen as a project dog, regardless of the experience of the showman, the dog will need to be evaluated by one of the Superintendents prior to participating in the KCYF show days. There are two given opportunities to meet this requirement, the April Walk-A-Thon and the July Preview Show. It is the responsibility of the showmen to schedule an appointment to meet with one of the Superintendents if they are unable to attend either of the above events.

SECTION 01 – DOG SHOWMANSHIP

Class #	Description
2200	Senior Showmanship, 17-21
2201	Intermediate Showmanship, 13-16
2202	Junior Showmanship, 10-12
2203	Novice Showmanship, 5-9
2204	Explorer Showmanship 5-9

SECTION 02 – DOG CARE AND HANDLING

Class #	Description	Entry Fee
2205	Explorer Rally	\$.50
2206	Explorer Obedience	\$.50
2207	Explorer Agility	\$.50
2208	Explorer Jumpers with Tunnels	\$.50
2209	Beginner Novice Obedience	\$.50

2210	Beginner Novice Obedience Handler (not eligible for grand & reserve)	\$.50
2211	Pre-Novice Obedience 5 - 9	\$.50
2212	Pre-Novice Obedience 10-12	\$.50
2213	Pre- Novice Obedience 13 - 16	\$.50
2214	Pre - Novice Obedience 17 - 21	\$.50
2215	Pre-Novice Obedience Handler (not eligible for grand & reserve)	\$.50
2216	Novice Obedience	\$.50
2217	Novice Obedience Handler (not eligible for grand & reserve)	\$.50
2218	Graduate Novice Obedience	\$.50
2219	Graduate Novice Obedience Handler (not eligible for grand & reserve)	\$.50
2220	Advanced Graduate Novice	\$.50
2221	Advanced Graduate Novice Handler (not eligible for grand & reserve)	\$.50
2222	Open Obedience	\$.50
2223	Open Obedience Handler (not eligible for grand & reserve)	\$.50
2224	Pre-Utility Obedience	\$.50
2225	Pre-Utility Obedience Handler (not eligible for grand & reserve)	\$.50
2226	Utility Obedience	\$.50
2227	Utility Obedience Handler (not eligible for grand & reserve)	\$.50
2228	Brace Obedience Class (not eligible for grand & reserve)	\$.50
2229	Team Obedience Class (not eligible for grand & reserve)	\$.50
2230	Rally Novice 5 - 9	\$.50
2231	Rally Novice 10 -12	\$.50
2232	Rally Novice 13 - 16	\$.50
2233	Rally Novice 17 - 21	\$.50
2234	Rally Novice Handler (not eligible for grand & reserve)	\$.50
2235	Rally Intermediate	\$.50
2236	Rally Intermediate Handler (not eligible for grand & reserve)	\$.50
2237	Rally Advanced	\$.50
2238	Rally Advanced Handler (not eligible for grand & reserve)	\$.50
2239	Rally Excellent	\$.50
2240	Rally Excellent Handler (not eligible for grand & reserve)	\$.50
2241	Rally Master	\$.50
2242	Rally Master Handler (not eligible for grand & reserve)	\$.50

2243	Beginner Agility 5 - 9	\$.50
2244	Beginner Agility 10 - 14	\$.50
2245	Beginner Agility 13 - 16	\$.50
2246	Beginner Agility 17 - 21	\$.50
2247	Beginner Agility Handler (not eligible for grand & reserve)	\$.50
2248	Intermediate Agility	\$.50
2249	Intermediate Agility Handler (not eligible for grand & reserve)	\$.50
2250	Advanced Agility	\$.50
2251	Advanced Agility Handler (not eligible for grand & reserve)	\$.50
2252	Agility Champions dog has 3 Qs in 4-H Advanced Agility or is titled in any registry	\$.50
2253	Agility Champion Handler (not eligible for grand & reserve)	\$.50
2254	Beginner Agility Jumpers with Tunnels 5 - 9	\$.50
2255	Beginner Agility Jumpers with Tunnels 10 - 12	\$.50
2256	Beginner Agility Jumpers with Tunnels 13 - 16	\$.50
2257	Beginner Agility Jumpers with Tunnels 17 - 21	\$.50
2258	Beginner Agility Jumpers with Tunnels Handler (not eligible for grand & reserve)	\$.50
2259	Intermediate Jumper with Weaves	\$.50
2260	Intermediate Jumper with Weaves Handler (not eligible for grand & reserve)	\$.50
2261	Advanced Jumper with Weaves	\$.50
2262	Advanced Jumper with Weaves Handler (not eligible for grand & reserve)	\$.50
2263	Jumpers Champion dog has 3 Qs in 4H Advanced or is titled in any registry	\$.50
2264	Jumpers Champion Handler (not eligible for grand & reserve)	\$.50
2265	Service Dog Evaluation	\$.50

SECTION 04 - DOG EDUCATION Required for all exhibitors and due at the July Dog Leaders Meeting

Class #	Description
2266	Dog Project Record Book - cumulative

DEPARTMENT 60 – YOUTH PERFORMING ARTS, DEMONSTRATION and MODELING

PERFORMING ARTS

Superintendent: Andrea Boyd 616.293.8381 andrealboyd@yahoo.com

Assistant Superintendent:

National Anthem - Saturday preceding fair 10:00am

Vocal & Instrumental - Thursday 2pm to 6pm (check in 1:30 pm)

Public Speaking, Demonstration, Broadcasting, Modeling - Friday 8am to 11:30am (check in 7:30 am)

Theatre, Clowning, Misc. Friday 1pm to 3:30pm; (check in 12:30 pm)

Dance Judging - Friday 4pm to 6:00pm (check in 3:30 pm)

Fair Exhibit Requirements:

1. The purpose of Performing Arts is to help encourage each exhibitor to develop his/her own presentation or performance and to provide the opportunity for youth to exhibit their talents and skills at the Kent County Youth Fair.
2. Exhibitors must attend in costume or proper attire and present their talent in a theatrical manner. All attire and content must be appropriate for a family friendly audience.
3. Each exhibitor may register for a **maximum of 4 unique classes in EACH area**. (National Anthem, Vocal Music, Instrumental Music, Dance, Theatre, etc.). Each exhibitor may only register in a class once.

EXAMPLE #1: Within the area of Vocal Music, an exhibitor may register for Vocal Solo, Vocal Duet, Vocal Ensemble, and Vocal Composition. However, an exhibitor may NOT register for Vocal Solo twice.

EXAMPLE #2: Within the area of Dance, an exhibitor may register for Jazz Ensemble, Tap Ensemble, Ballet Ensemble, and Hip Hop Duet. However, an exhibitor may NOT register for Jazz Ensemble twice.

4. Each member of a duet, trio or ensemble must register for the class. Duets, trios, and ensembles will be judged in the section of the oldest participant.
5. There are no headphones, earbuds, or any other personal audio assistive devices allowed, with the exception of our special needs exhibitors, who may utilize these resources, if needed, with prior approval of the Performing Arts Superintendent.
6. Entrants may not use the same material (song, skit, poem, etc.) from the previous three years of showing at the KCYF.
7. Each Exhibitor or ensemble must have a photo or poster to be left in their Club Booth.
8. **Performances may not exceed 7 minutes.** The superintendent reserves the right to limit performances length due to time constraints, however, every effort will be made to view the piece in its entirety.
9. All performances are to be contained within the stage area unless pre-approved by the superintendent.
10. The safety of the performers and audience members must be respected at all times.
11. Entries may not violate the Kent County Youth Fair Code of Conduct.

SECTION 01 – NOVICE (age 5-9)

SECTION 02 – JUNIOR (age 10-12)

SECTION 03 – INTERMEDIATE (age 13-16)

SECTION 05 – SENIOR (age 17-18)

SECTION 05 - ADVANCED (age 19-21)

NATIONAL ANTHEM

See general requirements above.

Information and requirements specific to National Anthem:

1. The purpose of National Anthem judging is to create a team of youth who will take turns performing the National Anthem at the beginning of departmental shows throughout Fair Week. Select entrants will be invited by the Performing Arts Superintendent to join the team. The schedule of performances will be coordinated based on showtimes and the availability of the selected performers.
2. The National Anthem may be performed as vocal, instrumental, or a combination of vocal and instrumental, and may be a solo, duet, or ensemble.
3. Participants must bring their own instruments and/or back-up tracks. As entries in this category need to be mobile, there will NOT be a piano provided.
4. Judging will take place the Saturday before Fair.

National Anthem			
Class #	Description	Entry Fee	Project Sheet
60001	National Anthem Solo	\$.50	No
60002	National Anthem Duet	\$.50	No
60003	National Anthem Ensemble (3 or more performers)	\$.50	No

VOCAL MUSIC

See general requirements above.

Information and requirements specific to Vocal Music:

1. All Vocal Music pieces must be memorized.
2. Microphones will be provided for Vocal performances.
3. A keyboard will be provided.
4. A playing device will be provided for background tracks. Please download any digital files prior to arriving on the fairgrounds.
5. Back-up vocals on recorded accompaniment are NOT allowed.
6. Exhibitors must bring original sheet music and provide a copy for the superintendent to keep on file for copyright purposes. If you are using a recorded background track, please purchase a vocal copy of the sheet music for that song, even if the arrangement is not exactly the same.
7. Vocal composition requirements - original composition must be written, including at least the lyrics, melody, and chords, with a copy submitted to the fair office by the Monday before Fair. Exhibitors must perform the composition during judging or submit a recording of the composition to the office along with the written copy.
8. **All vocal performances must be memorized.**

Vocal Music			
Class #	Description	Entry Fee	Project Sheet
60013	Solo	\$.50	No
60014	Duet	\$.50	No
60015	Ensemble (3 or more performers)	\$.50	No
60016	Composition	\$.50	No

INSTRUMENTAL MUSIC

See general requirements above.

Information and requirements specific to Instrumental Music:

1. Instrumentalists may use sheet music.
2. A keyboard will be provided.
3. A playing device will be provided for background tracks. Please download any digital files prior to arriving on the fairgrounds.
4. Up to 2 music stands are provided for participants. Entrants must provide additional music stands needed.
5. Exhibitors must bring original sheet music and provide a copy for the judge.
6. Composition requirements - original must be written, with a copy submitted to the Fair Office the Monday before Fair. Exhibitors must perform the composition during judging or submit a recording of the composition to the office with the written copy.

Instrumental Music			
Class #	Description	Entry Fee	Project Sheet
60020	Solo	\$.50	No
60021	Duet	\$.50	No
60022	Ensemble	\$.50	No
60023	Composition	\$.50	No

DANCE

See general rules.

Information and requirements specific to Dance:

1. A playing device will be provided for by background tracks. Please download any digital files prior to arriving on the fairgrounds.
2. Choreography requirements:
 - a: Choreography must be original choreography created by the exhibitor and taught to others or performed by yourself.
 - b: Choreography must be written (Dance Script) with a copy submitted to the Fair Office by the Monday before Fair.
 - c: Choreography Ensemble Class is for Senior and Advanced participants only.
 - d: Choreography Ensemble Class is one choreographer who has taught his/her original choreography to a group of dancers.
 - e: Only the choreographer registers and receives the award.

Dance			
Class #	Description	Entry Fee	Project Sheet
60025	Jazz Solo	\$.50	No
60026	Jazz Duet or Trio	\$.50	No
60027	Jazz Ensemble	\$.50	No
60028	Tap Solo	\$.50	No
60029	Tap Duet or Trio	\$.50	No
60030	Tap Ensemble	\$.50	No
60031	Ballet Solo	\$.50	No
60032	Ballet Duet or Trio	\$.50	No
60033	Ballet Ensemble	\$.50	No
60034	Hip Hop Solo	\$.50	No
60035	Hip Hop Duet or Trio	\$.50	No
60036	Hip Hop Ensemble	\$.50	No

60037	Modern Solo	\$.50	No
60038	Modern Duet or Trio	\$.50	No
60039	Modern Ensemble	\$.50	No
60040	Swing Duet	\$.50	No
60041	Swing Ensemble	\$.50	No
60042	Cultural Solo	\$.50	No
60043	Cultural Duet or Trio	\$.50	No
60044	Cultural Ensemble	\$.50	No
60045	Dance Choreography Individual	\$.50	No
60046	Dance Choreography Duo or Trio	\$.50	No
60047	Dance Choreography Ensemble (Senior. and Advanced Senior only)	\$.50	No
60048	Dance, Other	\$.50	No

THEATRE

See general requirements above.

Information and requirements specific to Theatre:

1. A monologue is 1 exhibitor performing alone. A dialogue or duo is 2 exhibitors performing together. A trio is 3 exhibitors performing together. An ensemble is 4 or more exhibitors performing together.
2. In special cases, with approval of the department superintendent, a video may be presented.
3. Puppetry exhibitors must use their own puppet and stage/theater (if needed) to perform a skit showing skill with the handling of the puppet.
4. The puppet or a photo of the puppet must be on display in the Club Booth.
5. Poetry Recitation has the following minimum length requirements:
Novice: 2 Stanzas
Junior: 4 Stanzas
Intermediate: 6 Stanzas
Senior and Advanced Senior: 8 Stanzas

Each stanza must be at least 4 lines. Each act/entry may include only one poem. Entries will be judged based on the age of the oldest participant. A printed copy of the poem must be provided to the judge prior to the performance.

6. Storytelling is the art of telling a narrative while engaging the emotions and energy of the audience. The story should evoke images and encourage the listener's imagination. The storyteller may use props and costumes, but may not read from a book.
7. **All Theatre performances must be memorized. This includes ANY class listed under Theatre (Acting, Poetry, Puppetry, Storytelling, etc.).**

Theatre			
Class #	Description	Entry Fee	Project Sheet
60051	Acting – Monologue	\$.50	No

60052	Acting – Dialogue or Trio	\$.50	No
60053	Acting - Ensemble	\$.50	No
60054	Poetry - Individual	\$.50	No
60055	Poetry – Duo or Trio	\$.50	No
60056	Poetry – Ensemble	\$.50	No
60057	Puppetry – Individual	\$.50	No
60058	Puppetry – Dialogue or Trio	\$.50	No
60059	Puppetry - Ensemble	\$.50	No
60060	Storytelling - Individual	\$.50	No
60061	Storytelling - Duo or Trio	\$.50	No
60062	Storytelling - Ensemble	\$.50	No

CLOWNING

See general requirements above.

Information and requirements specific to Clowning.

1. Clowning exhibitors must attend in costume, full make-up and present a clown skit, pantomime or routine.
2. Clowning exhibitors must develop their own clown “persona”, including name, costume, make-up, and characteristics of the clowns they are portraying.
3. **Clowning Project Books are required** and must be given to the judge prior to the performance. Project books should be creative and contain photos and information about the learning process, character development, clowning in general, and activities and performances throughout the previous year. **All Clowning exhibitors must register for the Clowning Project Book class.**

Clowning			
Class #	Description	Entry Fee	Project Sheet
60070	Clowning Individual	\$.50	No
60071	Clowning Dialogue or Trio	\$.50	No
60072	Clowning Ensemble	\$.50	No
60073	Clowning Project Book	\$.50	No

MISCELLANEOUS

See general requirements above.

Information and requirements specific to Miscellaneous:

1. No stunts or lifts are allowed.
2. Gymnasts must provide their own mats if needed.

Miscellaneous		
---------------	--	--

Class #	Description	Entry Fee	Project Sheet
60075	Magic Individual	\$.50	No
60076	Magic Ensemble	\$.50	No
60077	Stand-Up Comedy	\$.50	No
60078	Gymnastics Individual	\$.50	No
60079	Gymnastic Ensemble	\$.50	No
60080	Baton Individual	\$.50	No
60081	Baton Ensemble	\$.50	No
60082	Cheer Individual (No stunts or lifts allowed)	\$.50	No
60083	Cheer Ensemble (No stunts or lifts allowed)	\$.50	No
60084	Pom Pom Individual (No stunts or lifts allowed)	\$.50	No
60085	Pom Pom Ensemble (No stunts or lifts allowed)	\$.50	No
60086	Other Performing Arts Performance	\$.50	No

PUBLIC SPEAKING

See general requirements above.

Information and requirements specific to Public Speaking:

1. Speech and Historical Character entrants may use notecards as prompts and explain information contained in their posters (do not read the speech word for word).
2. Powerpoint may be used but the exhibitor must bring his/her own technical equipment.
3. Exhibitor must submit a photo or an educational poster to be displayed in the club booth.

Class #	Description	Entry Fee	Project Sheet
60087	Individual Speech	\$.50	No
60088	Individual Historical Character Presentation	\$.50	No

DEMONSTRATION

See general requirements above.

Information and requirements specific to demonstration:

1. Demonstration entrants may use notecards as prompts and explain information contained in their posters (do not read the speech word for word) entrants may use notecards as prompts
2. Demonstration should include an introduction, specific steps in the process being demonstrated, and a conclusion.
3. Exhibitor must submit a photo or an educational poster to be displayed in the club booth

Class #	Description	Entry Fee	Project Sheet
60089	Individual Demonstrations	\$.50	No
60090	Group of 2 or more (club exhibit)	\$.50	No

BROADCASTING

See general requirements above.

Information and requirements specific to Broadcasting:

1. Exhibitor may speak on a topic of interest to the exhibitor and will be judged on the content and delivery of his/her broadcast (his/her skills as a broadcaster).
2. Exhibitor must submit a photo or educational poster to be displayed in the club booth.
3. Broadcasting is intended to be informational, educational, or for entertainment, such as newscasts, travel guides, old-time radio shows, etc.
4. Broadcast may be performed live or pre-recorded.
5. Recorded broadcast must be submitted to the fair office by the Monday prior to Fair.

60091	Television/ Video Streaming	\$.50	No
60092	Radio Broadcasting	\$.50	No
60093	Podcast	\$.50	No

MODELING

See general requirements above.

Information and requirements specific to Modeling:

1. Garment modeled must have been evaluated during the Still Exhibit judging on Saturday as part of Clothing Classes (personally constructed or buymanship garment) and must remain on exhibit during the week of Fair.
2. Garment must be returned to Club Booth within one (1) hour after the conclusion of the Modeling judging.
3. Narration card (available online at KCYF.org under Performing Arts) must be turned in to the judge at the time of garment construction judging, no later than 3pm on Saturday preceding Fair. Do not leave a narration[] card in your garment project notebook!

Class #	Description	Entry Fee	Record Book
60095	Modeling	\$.50	No

DEPARTMENT 62 – YOUTH NEEDLEWORK

Superintendent: Jennifer Courtney 616-884-5123 jenniferbieneman@yahoo.com

CLOTHING

Fair Exhibit Requirements:

1. Exhibit best garment(s) made in connection with learning activity. Young Exhibitors – do not exhibit towel or head scarf.
2. All garments should be clean, pressed and checked for any needed repairs. Hems, buttons, zippers, etc. that are coming out will be marked down.
3. All garment(s) must have a completed notebook, typed or handwritten in ink, which will be exhibited with the garment at the fair. The notebook template is available at KCYF.org. A NEW notebook must be completed for each project year AND include the notebook(s) from previous years. A garment will not be considered a completed project without a notebook. Both the garment and notebook MUST be presented for judging at the same time on Saturday preceding fair.
4. Any project entered in classes 62001, 62002, 62003 & 62004 are eligible to be exhibited in class 60095 – Modeling.
5. Buymanship Guidelines are available on-line at: www.introductiontobuymanship.weebly.com This site is also very helpful in completing the buymanship class.

SECTION 01 – NOVICE (age 5-9)

SECTION 02 – JUNIOR (age 10-12)

SECTION 03 – INTERMEDIATE (age 13-16)

SECTION 04 – SENIOR (age 17-21)

Class #	Description	Entry Fee	Record Book
62001	Personally constructed garment	\$.50	Yes
62002	Totally machine-made garment – no hand sewing of any kind needed on project	\$.50	Yes
62003	Buymanship garment	\$.50	Yes
62004	Repurposed garment	\$.50	Yes
62005	Machine-made needlecraft – any creative needlework project made entirely on the sewing machine with no hand sewing needed to complete project	\$.50	No

CREATIVE STITCHERY

Fair Exhibit Requirements:

1. The project selected each year should be made with regard to the exhibitor's interest, age, and skill level.
2. New skills should be developed each year within a specific project area.
3. Quality of workmanship should be stressed. The project exhibited must be completely finished and be neat and clean for evaluation.
4. Judging will be based on cleanliness, workmanship, finishing techniques, and age/ability appropriateness.
5. Knitted and crocheted mittens, socks, slippers or gloves must be fastened together.
6. Pieced Project for Quilting (62021) must be prepared, assembled and completed (top and binding) by exhibitor. Judging is done on the assembly methods and finishing, not on the quilting. Quilting may be done by a professional with a long-arm quilting machine.

Class #	Description	Entry Fee	Project Sheet
62010	Blankets – projects that cannot be shown under any other class	\$.50	No
62011	Rugs - projects that cannot be shown under any other class	\$.50	No
62012	Cross Stitch	\$.50	No
62013	Embroidery	\$.50	No
62014	Plastic Canvas Needlepoint	\$.50	No
62015	Latch Hook	\$.50	No
62016	Purse/Tote/Bag	\$.50	No
62017	Doll clothes - at least 3 articles	\$.50	No
62018	Pet Accessories	\$.50	No
62019	Quilted Project	\$.50	No
62020	Quilt for Bed	\$.50	No
62021	Pieced Project for Quilting	\$.50	No
62022	Pillow(s)	\$.50	No
62023	Stuffed Toys & Dolls	\$.50	No
62024	Repurposed Item – non garment	\$.50	No
62025	Needle Felting	\$.50	No
62026	Knitted Wearable	\$.50	No
62027	Knitted Afghan/Blanket	\$.50	No

62028	Knitted Home Décor	\$.50	No
62029	Any Other Knitted Item	\$.50	No
62030	Loom Knitting	\$.50	No
62031	Crocheted Wearable	\$.50	No
62032	Crocheted Afghan/Blanket	\$.50	No
62033	Crocheted Home Decor	\$.50	No
62034	Any Other Crocheted Item	\$.50	No
62035	Weaving	\$.50	No
62036	Other Needlecraft	\$.50	No

YOUTH STILL EXHIBITS

Superintendent: Beth Perry 616-433-5342 bethperry1110@gmail.com

Release Time: 5PM Saturday end of fair

DEPARTMENT 64 - CREATIVE LITERARY ARTS

1. All entries (except Explorers) shall be typed, double-spaced and presented to the judge in a neat and attractive manner, except for when the project does not allow for typewritten word – cartooning, penmanship, etc. Explorers may turn in legible, handwritten projects.
2. All entries are due the **second Friday in July by 5pm**. Entries shall be turned in to the Exhibition Office. No other locations are accepted. Entries will be returned to the exhibitor on the Saturday of Still Exhibit judging when the exhibitor is interviewed by the judge.
3. Failure to meet these requirements will result in a lower A, B, or C rating by 1 full letter grade.
4. Group Journalism will be entered on the Club Entry Form.

Class #	Description	Entry Fee	Project Sheet
64001	Topical Essay (min. 600- max. 1000 words)	\$.50	No
64002	Topical Essay (min. 1001- max. 1500 words)	\$.50	No
64003	Journalism - News or Feature story – 4-6 paragraphs	\$.50	No
64004	Original Short Story - 3 page minimum, 15 page maximum	\$.50	No
64005	Poetry – 5 poems total	\$.50	No
64006	Script for Play	\$.50	No
64007	Written Speech	\$.50	No
64008	Storybook with Illustrations	\$.50	No
64009	Book Report	\$.50	No
64010	Research Paper	\$.50	No
64011	Newspaper or Publication - 1 sample	\$.50	No
64012	Cartoon	\$.50	No
64013	Other creative writing - Report, Journal (3 page min.), or personal biography	\$.50	No

DEPARTMENT 65 – YOUTH CULINARY ARTS

Fair Exhibit Requirements:

1. All general still exhibit rules apply.
2. Youth must display a sample food and a completed Project Sheet appropriate to their project area for each class. A **picture** of the exhibit must be included on the Project Sheet.
3. All exhibits requiring a **Project Sheet** must have the Project Sheet in a **clear plastic sleeve**. The sleeved Project Sheet must remain on display in the booth in place of the actual project for the duration of fair.
4. Exhibits may be sampled by the judge (except for decorated classes). After judging, each exhibitor may cut one piece of the baked item, place it on a plate, seal it in a plastic bag, and display it in the booth. The remaining baked or canned item may be taken home and consumed.
5. Perishable foods must be removed from the booth as necessary. Exhibit Building Superintendent may remove perishable items at their discretion.
6. Dummy/Styrofoam forms are not allowed in Decorated Baked Goods classes.
7. Decorated Cakes will be judged on appearance & techniques only.
8. For Food Creations, exhibit will be a display of vegetables and/or fruits that you have crafted into centerpieces, hors d'oeuvres, plate displays, etc. The actual Food Creation is not to be displayed in the booth. The Project Sheet and picture of project will remain on display in the booth.
9. Meal Planning class involves planning a meal according to age and ability. Make a table display (table setting, napkin folding, etc. with or without foods) or a poster. Plan a lunch, birthday party, fancy tea or similar event. Consider the theme and incorporate it into all aspects of the event.
10. No mixes or prepared foods can be used or entered.
11. Bread machines may be used to mix projects, but may only be used in the baking of the project in the bread machine class.
12. Exhibitor is required to bring two like items in each Canned Food Preservation class. One will be on display and the other may be opened by the judge. If item is opened, please take home and consume.
13. Canned foods must be in a quart jar or smaller. All jars must have regulation lids and rings to prevent accidental opening. Jars sealed with parafin will be disqualified.
14. Canned goods must be labeled with date, type of food, and processing method.
15. Exhibits in Frozen Food Preservation classes must be labeled with date and type of food, and be presented to the judge in a frozen state. Only the Project Sheet is required to remain on display in the booth.
16. Exhibits in Dehydrated Food Preservation classes must be labeled with date, type of food, and drying method.

SECTION 01 – NOVICE (age 5-9)

SECTION 02 – JUNIOR (age 10-12)

SECTION 03 – INTERMEDIATE (age 13-16)

SECTION 04 – SENIOR (age 17-21)

Class #	Description	Entry Fee	Project Sheet
65002	Food Creations	\$.50	Yes
65003	Any Other Food Exhibit	\$.50	Yes
Dairy Foods		Entry Fee	Project Sheet
65004	Cheesecake	\$.50	Yes
65005	Any Other Dairy Food	\$.50	Yes
Baked Goods		Entry Fee	Project Sheet
65006	Cake	\$.50	Yes
65007	Layer Cake	\$.50	Yes
65008	Frosted/Unfrosted Cupcakes (3 or more)	\$.50	Yes
65009	Bar Cookies (3 or more)	\$.50	Yes
65010	Brownie (3 or more)	\$.50	Yes

Class #	Description	Entry Fee	Project Sheet
65011	Chip Cookie (3 or more)	\$.50	Yes
65012	No Bake Cookie (3 or more)	\$.50	Yes
65013	Any Other Cookie (3 or more)	\$.50	Yes
65014	Bread Machine Bread	\$.50	Yes
65015	Yeast Bread	\$.50	Yes
65016	Quick Bread	\$.50	Yes
65017	Biscuits (3 or more)	\$.50	Yes
65018	Yeast Rolls (3 or more)	\$.50	Yes
65019	Muffins (3 or more)	\$.50	Yes
65020	Pie	\$.50	Yes
65021	Tarts (3 or more)	\$.50	Yes
65022	Cinnamon Rolls (3 or more)	\$.50	Yes
65023	Doughnut(s) (3 or more)	\$.50	Yes
65024	Any Other Baked Good (3 or more except pies and breads)	\$.50	Yes
Candy – 3 – 5 pieces must be displayed for each		Entry Fee	Project Sheet
65025	Fudge (3 – 5 pieces)	\$.50	Yes
65026	Peanut Brittle (3 – 5 pieces)	\$.50	Yes
65027	Dipped/Coated Candy (3 – 5 pieces)	\$.50	Yes
65028	Molded Candy (3 – 5 pieces)	\$.50	Yes
65029	Hard Candy (3 – 5 pieces)	\$.50	Yes
65030	Soft Candy (3 – 5 pieces)	\$.50	Yes
65031	Chocolates (3 – 5 pieces)	\$.50	Yes
65032	Caramels (3 – 5 pieces)	\$.50	Yes
65033	Maple Candy (3 – 5 pieces)	\$.50	Yes
65034	Any Other Candy (3 – 5 pieces)	\$.50	Yes
Decorated Baked Goods		Entry Fee	Project Sheet
65035	Cupcakes (3 or more)	\$.50	Yes
65036	Layer Cake	\$.50	Yes
65037	Pan Mold Cake	\$.50	Yes
65038	Sheet Cake	\$.50	Yes
65039	Cookie (3 or more)	\$.50	Yes

65040	Gingerbread House	\$.50	Yes
65041	Other Cake	\$.50	Yes
Canned Food Preservation		Entry Fee	Project Sheet
65042	Applesauce	\$.50	Yes
65043	Canned Pie Filling	\$.50	Yes
65044	Any Other Canned Fruit	\$.50	Yes
65045	Any Other Canned Vegetable	\$.50	Yes
65046	Canned Soup	\$.50	Yes
65047	Canned Sauce	\$.50	Yes
65048	Canned Jelly	\$.50	Yes
65049	Canned Jam	\$.50	Yes
65050	Canned Preserves	\$.50	Yes
65051	Canned Pickle	\$.50	Yes
65052	Canned Relish	\$.50	Yes
65053	Canned Salsa	\$.50	Yes
65054	Canned Meat	\$.50	Yes
65055	Canned Juice	\$.50	Yes
65056	Canned Fruit	\$.50	Yes
65057	Any Other Canned Item	\$.50	Yes
Dehydrated Food Preservation		Entry Fee	Project Sheet
65058	Fruit	\$.50	Yes
65059	Vegetables	\$.50	Yes
65060	Any Other Dehydrated Food	\$.50	Yes

DEPARTMENT 66 - CREATIVE PAINTING AND DRAWING

1. All pieces must be framed or matted and ready for hanging if applicable.
2. Absolutely no kits are allowed in Fine Arts.
3. Ink on Glass class may use any type of permanent ink marker as the ink medium.
4. Mixed Mediums class is for artwork that employs two different types of materials. For example, art that uses crayon and pencil is mixed media.

SECTION 01 – NOVICE (age 5-9)

SECTION 02 – JUNIOR (age 10-12)

SECTION 03 – INTERMEDIATE (age 13-16)

SECTION 04 – SENIOR (age 17-21)

Class #	Description	Entry Fee	Project Sheet
66001	Acrylic Painting	\$.50	No

66002	Oil Painting	\$.50	No
66003	Pastels	\$.50	No
66004	Paint on Glass	\$.50	No
66005	Tempera	\$.50	No
66006	Charcoal	\$.50	No
66007	Watercolor	\$.50	No
66008	Crayon	\$.50	No
66009	Any Other Painting Project	\$.50	No
66010	Alcohol Ink (rubbing alcohol)	\$.50	No
66011	Ink Drawing	\$.50	No
66012	Ink on Glass	\$.50	No
66013	Calligraphy	\$.50	No
66014	Zentangle Free Hand	\$.50	No
66015	Pencil Drawing	\$.50	No
66016	Colored Pencil Drawing	\$.50	No
66017	Any Other Drawing Project	\$.50	No
66018	Mixed Mediums	\$.50	No

DEPARTMENT 67 – YOUTH FOLK ARTS and CRAFTS

Fair Exhibit Requirements:

1. The project selected each year should be made with regard to the exhibitor's interest, ability and age. All arts and crafts must be the original work of the exhibitor.
2. Exhibitors should select projects each year in which they will develop new skills. Project should reflect the exhibitor's learning experience.
3. Exhibits are judged on: quality of workmanship, color, harmony, good design, good preparation, suitability of material, creativity and overall presentation.
4. Arts and Crafts in frames or designed to be wall hangings must have hangers attached.
5. Trash to Treasure class requires recycling materials. Project must include a before photo of items used.
6. Other Craft classes are for projects that are unable to be exhibited in any other class in Department 67.
7. Exhibitors with collections may leave the collection on display in the booth or may display a poster with details of their collection.
8. Puzzles must be completely assembled and displayed in a manner that does not allow the puzzle to come apart. Three dimensional puzzles must either be glued on viewable surface or puzzle pieces should be attached with double sided tape.
9. 2-D puzzles have the following minimum requirements:
Novice: 50 or more Junior: 300 pieces Intermediate: 500 pieces Senior: 1000 pieces

SECTION 01 – NOVICE (age 5-9)

SECTION 02 – JUNIOR (age 10-12)

SECTION 03 – INTERMEDIATE (age 13-16)

SECTION 04 – SENIOR (age 17-21)

Class #	Description	Entry Fee	Project Sheet
---------	-------------	-----------	---------------

67000	Basketry (hand -made reed)	\$.50	No
67001	Basket – other medium	\$.50	No
67002	Bead work – other than jewelry	\$.50	No
67003	Diamond Art	\$.50	No
67004	Decoupage	\$.50	No
67005	Dough craft	\$.50	No
67006	Dream Catcher	\$.50	No
67007	Fabric Art	\$.50	No
67008	Shadow Box Collage	\$.50	No
67009	Home Décor	\$.50	No
67010	Mask	\$.50	No
67011	Stepping Stone	\$.50	No
67012	Artificial Floral Arrangement	\$.50	No
67013	Model – Project judged on what exhibitor has learned rather than item made.	\$.50	No
67014	Paint by Number	\$.50	No
67015	Sand Art	\$.50	No
67016	Stenciling	\$.50	No
67017	Tin Punch	\$.50	No
67018	Trash to Treasure	\$.50	No
67019	T-shirt or Sweatshirt - painted medium	\$.50	No
67020	T-shirt or Sweatshirt - any other medium	\$.50	No
67021	Wreath	\$.50	No
67022	Zentangle - pre-drawn	\$.50	No
67023	Birdhouses	\$.50	No
67024	Faerie House	\$.50	No
67025	Paper gift bag with matching tag	\$.50	No
67026	Homemade Greeting Card	\$.50	No
67027	Yard Art	\$.50	No
67028	Duct Tape Creation	\$.50	No
67029	Tie Dye	\$.50	No
67030	Yarn Craft	\$.50	No
67031	Soap Carving	\$.50	No

67032	Rubber Stamping	\$.50	No
67033	Diorama	\$.50	No
67034	Shoebox Float	\$.50	No
67035	String Art	\$.50	No
67036	2-D or 3-D Puzzle	\$.50	No
67037	Any Other Crafts	\$.50	No
67038	Any Other Decorated Item	\$.50	No
67039	Restored Item	\$.50	No
Nature Craft			
67040	Centerpiece	\$.50	No
67041	Wall Hanging	\$.50	No
67042	Wreath	\$.50	No
67043	Painted Stone	\$.50	No
67044	Seed Art	\$.50	No
67045	Any Other Nature Craft	\$.50	No
Holiday Decorations			
67046	Christmas	\$.50	No
67047	Christmas Ornaments	\$.50	No
67048	Halloween	\$.50	No
67049	Patriotic	\$.50	No
67050	Easter	\$.50	No
67051	Wreath	\$.50	No
67052	Any Other Holiday Decoration	\$.50	No
Jewelry			
67053	Beaded	\$.50	No
67054	Wire Wrap	\$.50	No
67055	Necklace	\$.50	No
67056	Bracelet	\$.50	No
67057	Earrings	\$.50	No
67058	Jewelry Set	\$.50	No
67059	Any Other Jewelry	\$.50	No
Paper Craft			

67060	Quilling	\$.50	No
67061	Origami	\$.50	No
67062	Tissue Paper	\$.50	No
67063	Hand Made Paper	\$.50	No
67064	Mod Podge	\$.50	No
67065	Any Other Paper Craft	\$.50	No
No Sew Articles			
67066	Dolls	\$.50	No
67067	Stuffed Animals	\$.50	
67068	Blanket	\$.50	No
67069	Pillow	\$.50	No
67070	Any Other No Sew	\$.50	No
Candle Making			
67071	Candle Making	\$.50	No
Scrapbooking			
67072	Scrapbooking Themed Page	\$.50	No
67073	Scrapbooking Completed Book	\$.50	No
67074	Diamond Art Free Hand - no kits	\$.50	No
67075	Glass Etching	\$.50	No
67076	Glass Fusion	\$.50	No
67077	Mosaic	\$.50	No
67078	Stained Glass	\$.50	No
67079	Any Other Glass Project	\$.50	No
67080	Hand Sculpturing Wire	\$.50	No
67081	Hand Sculpturing Paper Mache	\$.50	No
67082	Hand Sculpturing Bakeable Clay	\$.50	No
67083	Any Other Sculpture Project	\$.50	No

Class #	Creative Ceramics/Plastercraft	Entry Fee	Project Sheet
67084	Underglaze Ceramic (done on greenware)	\$.50	No
67085	Stains Ceramic: gold or silver on bisque	\$.50	No
67086	Hand Built Ceramic: coil, slab, etc.	\$.50	No

67087	Glazed and Fired Ceramic	\$.50	No
67088	Chalks & Dry Brushing Ceramic	\$.50	No
67089	Plaster Craft	\$.50	No
67090	Any Other Ceramic/Plaster Craft– Must fill out “other” class record sheet	\$.50	Yes

DEPARTMENT 68 – YOUTH HERITAGE

SECTION 01 – NOVICE (age 5-9)

SECTION 02 – JUNIOR (age 10-12)

SECTION 03 – INTERMEDIATE (age 13-16)

SECTION 04 – SENIOR (age 17-21)

CULTURAL HERITAGE

1. Cultural Heritage projects examine the importance of familial and ethnic traditions.
2. Exhibits should consist of the actual project and/or an educational poster.

Class #	Description	Entry Fee	Project sheet
68000	Food in Folklore	\$.50	No
68001	Recipe Collection	\$.50	No
68002	Food Crafts	\$.50	No
68003	Medicinal Herbs and Practices	\$.50	No
68004	Genealogy	\$.50	No
68005	Games and Toys	\$.50	No
68006	Crafts	\$.50	No
68007	Music	\$.50	No
68008	Customs	\$.50	No
68009	Clothing	\$.50	No
68010	Stories	\$.50	No
68011	Cemetery Study or Archaeological Dig	\$.50	No
68012	Occupations and Skills	\$.50	No
68013	Family Folklore	\$.50	No
68014	Architecture	\$.50	No
68015	Other Folklore Project	\$.50	No
68016	Heritage Gardening	\$.50	No
68017	Our International Heritage	\$.50	No
68018	Our American Heritage	\$.50	No
68019	Our Michigan Heritage	\$.50	No
68020	Folk Pattern – Folklore Collections	\$.50	No
68021	Maps	\$.50	No

DEPARTMENT 69 – YOUTH PHOTOGRAPHY

Photography

SECTION 01 – NOVICE (age 5-9)

SECTION 02 – JUNIOR (age 10-12)

SECTION 03 – INTERMEDIATE (age 13-16)

SECTION 04 – SENIOR (age 17-21)

1. Each photograph(s) may only be shown under one class.
2. All individual photographs must be matted with glass and in a frame.
3. Images may be edited for slight improvements of color, clarity, composition, saturation and contrast, etc.
4. Projects will be graded on presentation, technique, effort, knowledge, composition, knowledge of image enlargements, complexity, uniqueness and skill level for age depending upon the class description.
5. Image resolution on enlargement classes should be 300 dpi to avoid pixelization in the printed photograph.

Class #	Description	Entry Fee	Project Sheet
69001	Digital Enhanced Photograph - Display one color 5x7 "before" and one color 5x7 "after" photo mounted together on a matte board in an aesthetically pleasing manner. The "before" image should be an unprocessed digital image from the camera. The "after" photograph should be a digital image altered in a software program. Alterations to the image must be apparent and explainable. Please do not use presets, actions, or pre-determined special effects on the editing process.	\$.50	No
69002	Digital Photograph Album - Display twenty 4x6 digital prints (color or black & white or a mix of both) in a photo album with one common theme (i.e. animals or portraits or landscapes, etc.)	\$.50	No
69003	Digital Photo Black and White Enlargement - one black and white printed photo, 8x10 or larger. Black & white photo must be either processed in the digital camera as black & white or in an editing software program.	\$.50	No
69004	Digital Photo Color Enlargement - one color printed photo, 8x10 or larger.	\$.50	No
69005	Digital Portfolio - Display five color 5x7 printed photos, mounted together on a matte board , one of each of the following: Landscape, Animal, Portrait, Architecture, Event.	\$.50	No
69006	Digital Photo Sequence - Sequence of six to ten 4x6 printed photos(color or black & white or a mix of both) of a theme related sequence(either all same subject matter or easily recognizable theme) mounted together on a matte board . Be prepared to tell the story of how you captured the images and the circumstances in which the situation occurred to capture the images.	\$.50	No
69007	Digital Photo Journalism - One 5x7 printed photo mounted on a matte board with a short, descriptive news commentary. Commentary must be creative, concise, descriptive and relate to the photograph in some way. Please no autobiographies. Commentary must not exceed one page double spaced, must be created in a software program such as Microsoft Word, and must be attached to the matte board with the photograph.	\$.50	No
69008	Education Photography Exhibit - Make an innovative photography exhibit which teaches the public something that you have learned about photography. Project must include a short report, no longer than one page. Be detail oriented in describing what you have learned. Your report must be accompanied by a minimum of one 5x7 photograph	\$.50	No

	mounted on a matte board . Be prepared to explain what you have learned through your project to the judge.		
69009	Photography Collage - Using 6-10 photographs, create a photo collage using a computer photo editing program method and/or create a photo collage using a "scrap-book" method, using crafts, decorations, embellishments, etc., or a combination of both methods. The collage must be mounted on a minimum 8x10 up to maximum 11x18 matte board for presentation.	\$.50	No
69020	Farm Life – 8x10 or larger, matted and framed	\$.50	No
69021	Animals & Birds - 8x10 or larger, matted and framed	\$.50	No
69022	Patterns & Design - 8x10 or larger, matted and framed	\$.50	No
69023	Buildings & Structures - 8x10 or larger, matted and framed	\$.50	No
69024	Flora & Fauna - 8x10 or larger, matted and framed	\$.50	No
69025	Action - 8x10 or larger, matted and framed	\$.50	No
69026	People -8x10 or larger, matted and framed	\$.50	No
69027	Any Other Subject Photo - 8x10 or larger, matted and framed	\$.50	No

Videography

1. All video production entries are due the **Second Friday in July by 5pm** at the Exhibition Office,
2. Videos will be returned to the exhibitor during your interview with the judge.
3. Video production entries must be displayed with a Project Sheet in the booth. Project Sheets are available at KCYF.org
4. Broadcasting (for entertainment or informational purposes) should be entered under Department 60.

Class #	Description	Entry Fee	Project Sheet
69030	Video Commercial - Must be 30 seconds to 1 minute in length.	\$.50	Yes
69031	Fair Video Commercial – Video commercial must promote the Kent County Youth Fair. Video may be used by the Kent County Youth Fair to promote the fair. Commercial must be 15 seconds to 1 minute in length.	\$.50	Yes
69032	Animated Film Video - Use homemade characters or miniatures. Video must be 3-5 minutes in length.	\$.50	Yes
69033	Movie - Film and edit a play or pageant. Movie must be 15-20 minutes in length.	\$.50	Yes
69034	Music Video - Individual song or medley, no longer than 5 minutes.	\$.50	Yes

DEPARTMENT 70 – YOUTH AGRICULTURE

SECTION 01 – NOVICE (age 5-9)

SECTION 02 – JUNIOR (age 10-12)

SECTION 03 – INTERMEDIATE (age 13-16)

SECTION 04 – SENIOR (age 17-21)

1. Each exhibit must have a visual or poster to be left on display in the booth.
2. Present an educational topic to the judge relating to the class entered.
3. Exhibitor may choose a topic appropriate to their age and experience.
4. Small animals may be exhibited as part of a project, but do not remain on display during Fair.

Animal Science

Class #	Description	Entry Fee	Record Book
70000	Dairy	\$.50	No
70001	Beef	\$.50	No
70002	Sheep	\$.50	No
70003	Swine	\$.50	No
70004	Horse	\$.50	No
70005	Goat	\$.50	No
70006	Poultry	\$.50	No
70007	Rabbit	\$.50	No
70008	Cavy	\$.50	No
70009	Dog	\$.50	No
70010	Alpaca	\$.50	No
70011	Any Other Animal Science Project	\$.50	No
70012	All Veterinary Science Projects - must include poster	\$.50	No

Pocket Pets Exhibit

1. Every competitive exhibitor is required to present a Record Book.
2. Reptiles, amphibians and fish entries must be non-venomous.
3. Judging will take place the Saturday before Fair between 10 AM and 3 PM.

Pocket Pet Exhibit			
70013	Pocket Pets(rats, mice, hamsters, gerbils, etc.) and Required RecordBook	\$.50	No

Field Crops

1. Grain entries must be displayed in a clean quart glass jar with lid and ring.
2. Grain entries are to be from most recent crop.
3. Grass entries must be displayed in one flake.
4. All field crop entries must be labeled as to variety.

Class #	Description	Entry Fee	Record Book
---------	-------------	-----------	-------------

70014	Field Corn	\$.50	No
70015	Potatoes, 10 tubers	\$.50	No
70016	Wheat	\$.50	No
70017	Oats	\$.50	No
70018	Barley	\$.50	No
70019	Soybean	\$.50	No
70020	Speltz	\$.50	No
70021	Any other grain	\$.50	No
70022	Leaf of Hay - any kind	\$.50	No
70023	Second cutting hay	\$.50	No
70024	Second cutting hay, alfalfa	\$.50	No
70025	Second cutting hay, clover	\$.50	No
70026	Third cutting hay, mixed	\$.50	No
Class #	Description	Entry Fee	Record Book
Crop Science -educational poster display depicting aspects of growing and/or harvesting crops.			
70027	Individual Educational Exhibit	\$.50	No

Other Agricultural Projects

1. Each exhibit must include a visual poster to be left on display in the booth.
2. Exhibitor may also include 3 D items for display along with the poster but 3 D items are not required.
3. Present an educational topic to the judge relating to the class entered.

Class #	Description	Entry Fee	Record Book
70028	Cider	\$.50	No
70029	Honey, Strained	\$.50	No
70030	Honey, Comb	\$.50	No
70031	Maple Syrup	\$.50	No
70032	Earthworms	\$.50	No
70033	Manure Management	\$.50	No
70034	Composting	\$.50	No
70035	Animal Fiber	\$.50	No
70036	Plant Fiber	\$.50	No
70037	Any Other Agricultural Project	\$.50	No

DEPARTMENT 71 – YOUTH FLORICULTURE

SECTION 01 – NOVICE (age 5-9)

SECTION 02 – JUNIOR (age 10-12)

SECTION 03 – INTERMEDIATE (age 13-16)

SECTION 04 – SENIOR (age 17-21)

1. Exhibits are to be grown by the exhibitor.
2. Remove foliage that is below the water line. Leave all other foliage.
3. Do not add extra stems of foliage unless entering Class 71013.
4. Exhibits are judged on: Form (roundness of bloom), Color (good, clean, clear colors), Substance (healthy condition), and Good foliage (no spray, insect damage, etc.)
5. Project sheet is required for classes 71001 - 71009, and 71013 - 71015. Project should be removed from booth at first sign of deterioration. Project Sheet must remain on display in booth for week of fair.
6. Use appropriate container (glass jar, vase, etc.) for displaying flowers.
7. No wreaths should be entered in Floral and Dried Floral Arrangement classes. See Nature Craft class #67042.
8. Floriculture Educational Exhibit or Experiment must be displayed in poster format.
9. For Outdoor Container Garden, Water Garden, Faerie Garden, and Indoor Gardening classes, the plants must be in a pot that can be easily transported for the exhibitor. Exhibitor is required to maintain the pot throughout fair week.

Class #	Description	Entry Fee	Project Sheet
71001	Sunflower - display one head	\$.50	Yes
71002	Annual – 1 large (flower is 3 ½" in diameter or larger)	\$.50	Yes
71003	Annual – 3 small (flower is under 3 ½" in diameter)	\$.50	Yes
71004	Perennial – 1 large (flower is 3 ½" in diameter or larger)	\$.50	Yes
71005	Perennial – 3 small (flower is under 3 ½" in diameter)	\$.50	Yes
71006	Gladiolus	\$.50	Yes
71007	Dahlia	\$.50	Yes
71008	Other Outdoor Bulb	\$.50	Yes
71009	Rose	\$.50	Yes
71010	Hanging Basket –planted within last two months and maintained	\$.50	No
71011	Outdoor Container Garden – should contain at least 3 types of plants.	\$.50	No
71012	Water Garden – should contain at least 2 types of water plants	\$.50	No
71013	Floral Arrangement – must contain specimens from your garden	\$.50	Yes
71014	Dried Floral Arrangement -must contain personally dried flowers	\$.50	No
71015	Corsage – made from your personally grown flowers	\$.50	Yes
71016	Floriculture Educational Exhibit or Experiment	\$.50	No
71017	Faerie Garden	\$.50	No
71018	House Plant	\$.50	No
71019	Flowering House Plant	\$.50	No
71020	Dish Garden or Terrarium	\$.50	No

71021	Indoor Water Garden (rooting medium is WATER)	\$.50	No
71022	Air Plant	\$.50	No
71023	Any Other Floriculture Exhibit	\$.50	No

DEPARTMENT 72 – YOUTH HORTICULTURE

SECTION 01 – NOVICE (age 5-9)

SECTION 02 – JUNIOR (age 10-12)

SECTION 03 – INTERMEDIATE (age 13-16)

SECTION 04 – SENIOR (age 17-21)

1. All vegetables must be exhibited in a suitable container for the project. (Clear plastic container, basket, etc.)
2. Exhibit fruits and vegetables in the stage of development they are in at the time of fair.
3. Exhibits should be of same variety and selected for size, uniformity and absence of blemish.
4. Exhibits must be displayed with a Project Sheet. Project Sheets are available at KCYF.org.
5. Patio Pot classes are required to have the project on display in the booth. Exhibitor must maintain the patio pot throughout the week of fair.

Class #	Description	Entry Fee	Project Sheet
72001	Most Unusual or Strangely Shaped Vegetable or Fruit	\$.50	Yes
Vegetables			
72002	Beans, 12 pods	\$.50	Yes
72003	Beets, 3	\$.50	Yes
72004	Broccoli, 1 bunch	\$.50	Yes
72005	Cabbage, 1 head	\$.50	Yes
72006	Carrots, 6	\$.50	Yes
72007	Cauliflower, 1 head	\$.50	Yes
72008	Cucumbers, pickling 6	\$.50	Yes
72009	Cucumbers, slicing 3	\$.50	Yes
72010	Eggplant, 1	\$.50	Yes
72011	Lettuce	\$.50	Yes
72012	Onions, 3	\$.50	Yes
72013	Peas, 12 pods	\$.50	Yes
72014	Peppers, 3 of same variety	\$.50	Yes
72015	Potatoes, 5	\$.50	Yes
72016	Pumpkin, 1	\$.50	Yes
72017	Radishes, 5	\$.50	Yes
72018	Rhubarb, 3 stalks with leaves	\$.50	Yes
72019	Spinach	\$.50	Yes
72020	Gourds, 3	\$.50	Yes

72021	Squash, Summer 3	\$.50	Yes
72022	Squash, Winter 1	\$.50	Yes
72023	Zucchini, 1	\$.50	Yes
72024	Vegetable Display – display of at least 6 different vegetables	\$.50	Yes
72025	Any Other Vegetable Not Listed	\$.50	Yes
Herbs		Entry Fee	Project Sheet
72026	Individual Herb	\$.50	Yes
72027	Patio Pot of Herbs	\$.50	Yes
Fruit		Entry Fee	Project Sheet
72028	Grapes – one bunch	\$.50	Yes
72029	Strawberries – one pint	\$.50	Yes
72030	Peaches - 3	\$.50	Yes
72031	Apples - 3	\$.50	Yes
72032	Raspberries – one pint	\$.50	Yes
72033	Blueberries – one pint	\$.50	Yes
72034	Pears – 3	\$.50	Yes
72035	Plums – 3	\$.50	Yes
72036	Cantaloupe, 1	\$.50	Yes
72037	Watermelon, 1	\$.50	Yes
Fruit Continued		Entry Fee	Project Sheet
72038	Tomatoes, 5 of same variety	\$.50	Yes
72039	Tomatoes, Cherry 12 of same variety	\$.50	Yes
72040	Any Other Fruit not listed	\$.50	Yes

DEPARTMENT 73 – YOUTH SCIENCES AND NATURAL RESOURCES

SECTION 01 – NOVICE (age 5-9)

SECTION 02 – JUNIOR (age 10-12)

SECTION 03 – INTERMEDIATE (age 13-16)

SECTION 04 – SENIOR (age 17-21)

- Exhibits should be a visual display of either a poster exhibiting what has been learned or a display box with a see-through cover for collections.
- Classes 73003 - 73005 should be displayed in a display box with each specimen clearly labeled. Collections should grow by a minimum of 5 additional specimens each year exhibited. May only exhibit one purchased additional specimen each year collection is exhibited.

Class #	Description	Entry Fee	Project Sheet
73000	Science Experiment	\$.50	No

73001	Plant Science	\$.50	No
73002	Landscaping	\$.50	No
73003	Collections of Rocks and Minerals	\$.50	No
73004	Collection of Fossils	\$.50	No
73005	Collection of Shells	\$.50	No
73006	Geological Exhibit	\$.50	No

ENTOMOLOGY

Fair Exhibit Requirements:

1. Using Entomology Manuals as references the exhibitor can display an educational exhibit showing to the public what has been learned.
For all classes in this section, use standard exhibit boxes (18" x 24" x 3 ½").
2. Collection labels available online at KCYF.org
3. Each Entomology exhibit is an individual exhibit.
4. Entomology collections (class 73007) are meant to be a cumulative project based upon years of participation.
Explorers – minimum of 15 specimens
Novice – minimum 25 specimens with additional 25 for each project year
Junior – minimum 25 specimens with additional 25 for each project year
Intermediate - minimum 25 specimens with additional 25 for each project year
Senior – minimum 50 specimens with additional 25 for each project year

Class #	Description	Entry Fee	Project Sheet
73007	Entomology Collection	\$.50	No
73008	Entomology Illustration - prepare at least 5 (any medium) of insects showing form, habits, life cycle or other interesting information.	\$.50	No
73009	Beekeeping (All projects) – prepare an education poster	\$.50	No
73010	Other Entomology Related Exhibits	\$.50	No

NATURAL RESOURCES

SECTION 01 – NOVICE (age 5-9)

SECTION 02 – JUNIOR (age 10-12)

SECTION 03 – INTERMEDIATE (age 13-16)

SECTION 04 – SENIOR (age 17-21)

1. Exhibit poster relaying information related to the topic. Collections may be displayed in a book or folder.
2. No protected species may be collected and will not be permitted to be exhibited.
3. Photographs are highly recommended for use in your educational poster.

Class #	Description	Entry Fee	Record Book
73011	Basic Conservation	\$.50	No
73012	Air	\$.50	No
73013	Water	\$.50	No
73014	Soil	\$.50	No

73015	Forestry	\$.50	No
73016	Wildlife	\$.50	No
73017	Wildflowers	\$.50	No
73018	Plants (also includes mushrooms and fungi)	\$.50	No
73019	Leaves	\$.50	No
73020	Pond Life/ Wetlands	\$.50	No
73021	Shells (must be property of exhibitor)	\$.50	No
73022	Birds	\$.50	No
73023	Improving your Environment	\$.50	No
73024	Astronomy/Space/Blue Sky	\$.50	No
73025	Weather	\$.50	No
73026	Any Other Natural Resources Project	\$.50	No

OUTDOOR EDUCATION

1. Exhibit should portray an item used in outdoor recreation.
2. Exhibit should include an educational poster with artwork to display.
3. Outdoor Skill educational display must educate the public on steps needed to perform an outdoor skill. Examples: how to build a shelter, how to make knots, outdoor safety, etc.
4. Taxidermy and Fly Tying should display the project and/or include an educational poster.

Class #	Description	Entry Fee	Record Book
73027	Personal/Group Gear Project	\$.50	No
73028	Handmade Item from Natural Materials	\$.50	No
73029	Outdoor Skill Educational Display	\$.50	No
73030	Taxidermy	\$.50	No
73031	Tanning	\$.50	No
73032	Fly Tying	\$.50	No
73033	Any Other Outdoor Education Project	\$.50	No

DEPT. 74 – YOUTH WOODWORKING, EDUCATION, BUSINESS, and CITIZENSHIP

SECTION 01 – NOVICE (age 5-9)

SECTION 02 – JUNIOR (age 10-12)

SECTION 03 – INTERMEDIATE (age 13-16)

SECTION 04 – SENIOR (age 17-21)

WOODWORKING

Fair Exhibit Requirements:

1. Exhibitor should be able to explain the project and the steps, techniques and tools used. Project should show growth year to year.
2. Exhibitor should be able to identify materials used, explain choice of materials, and characteristics of the materials.
3. Exhibit should show square construction where intended, snug joinery, even edges with uniform overlap, smooth and complete

finish, fasteners and hardware assembled and installed correctly, and be capable and serviceable.

Class #	Description	Entry Fee	Project Sheet
74001	Woodworking	\$.50	No
74002	Woodburning	\$.50	No
74003	Woodcarving	\$.50	No
74004	Woodturning	\$.50	No
74005	Leathercraft	\$.50	No
74006	Lapidary Work	\$.50	No

EDUCATIONAL

1. Exhibitors may exhibit a project and/or an educational poster on selected topic.
2. Drawings must be displayed on matte board or foam board
3. Exhibitor may display a poster as well as a 3-D project in Rocketry and Robotics.

Class #	Description	Entry Fee	Project Sheet
Industrial Arts Educational			
74007	Welding	\$.50	No
74008	Metals	\$.50	No
74009	Plastics	\$.50	No
74010	Architectural Drawing	\$.50	No
74011	Mechanical Drawing	\$.50	No
74012	CAD Drawing	\$.50	No
74013	Graphic Arts (Other than computer generated)	\$.50	No
74014	Legos or Construction Blocks - original design, NOT A KIT	\$.50	No
74015	Computer Programmed Robotics	\$.50	No
74016	Robotic Component Construction (one article made of junk drawer every day components, must be an original design and project, no kits)	\$.50	No
74017	Robotic with Moving Part	\$.50	No
74018	Other Industrial Arts Project	\$.50	No
Engine Power, Care and Safety		Entry Fee	Project Sheet
74019	Small Engines (2 cycle)	\$.50	No
74020	Tractor Care and Safety	\$.50	No
74021	Automotive Care and Safety	\$.50	No
74022	ATV, Motorcycle, Snowmobile Care and Safety	\$.50	No
74023	Marine Care and Safety	\$.50	No
74024	Rocketry Care and Safety	\$.50	No
74025	Other Engine Power Care and Safety	\$.50	No
Recreational Education			
74026	Winter Sports - Skiing, Snowboarding, etc.	\$.50	No
74027	Bicycling	\$.50	No

74028	Sport Fishing	\$.50	No
74029	Motorcycle	\$.50	No
74030	Snowmobile	\$.50	No
74031	Roller-Skating / Roller-Blading	\$.50	No
74032	Hiking	\$.50	No
74033	Sports - basketball, baseball, etc	\$.50	No
74034	Games – board games, outdoor games, etc.	\$.50	No
74035	Shooting Sports	\$.50	No
74036	Archery	\$.50	No
74037	Other Recreational Education Projects	\$.50	No
Health, Safety and First Aid			
74038	Health Safety –bicycle, home, farm, water, fire protection, hazard removal, etc.	\$.50	No
74039	Health Fitness, Nutrition	\$.50	No
74040	First Aid	\$.50	No
Health, Safety and First Aid Continued			
74041	Emergency Preparedness	\$.50	No
74042	Basic Life Support and CPR	\$.50	No
74043	Other Health, Safety and First Aid Project	\$.50	No

YOUTH BUSINESS

- Exhibits must be displayed in the format of an educational poster.
- Projects for classes 74047 through 74053 must be turned in to the fair office by the **Second Friday in July at 5pm** in digital format. A poster must be displayed in the booth.

Class #	Description	Entry Fee	Project Sheet
74044	Entrepreneurship – present a business enterprise	\$.50	No
74045	Resource or Financial Management – illustrate management skills learned	\$.50	No
74046	Citizenship or Public Policy-Making – illustrate community service activities	\$.50	No
74047	Business Educational Project	\$.50	No
74048	Electrical and Electronics	\$.50	No
74049	Computer Graphics	\$.50	No
74050	Computer Animation	\$.50	No
74051	Website Construction	\$.50	No
74052	Powerpoint Presentation	\$.50	No
74053	Word Processing	\$.50	No
74054	Spreadsheet or Database Presentation	\$.50	No
74055	Any Other Youth Business Project	\$.50	No

FAIR YOUTH CITIZENSHIP

- Must be in the Senior division (15 to 19) to exhibit in this class.
- Exhibitor must present a notebook during interview with judge.
- Interviews are by appointment only during week of fair. Contact Exhibition Office to schedule appointment.

- Exhibitor notebooks should contain explanation of any projects or volunteer work done including basic responsibilities, challenges faced, and lessons learned. Please include photos of events you are involved in and any lesson materials you may have developed.
- Advisor sheets should be filled out for **each** area that the youth participates in and placed in notebook.
Advisor sheets can be found at KCYF.org.
- Youth are encouraged to showcase their achievements in citizenship through volunteer work at fair, clubs, churches, and other organizations.

Class #	Description	Entry Fee	Project Sheet
74056	Fair Youth Citizenship Intermediates and Seniors only	\$.50	Yes

DEPARTMENT 75 - TRACTOR DRIVING CONTEST

Show time: Friday, at 2:30 p.m. on the pulling track

Fair Exhibit Requirements:

- Contestants must use tractors selected by the superintendent.
- Contestants must operate tractors in a safe manner and at a safe speed at all times.
- Judges will determine maximum safe speed.
- Scoring will be done by "Points Off" or "Points Penalty" system. The lowest total score will be declared the winner.
- A time limit set by the judges will be enforced.
- A maximum of ten members per club will be permitted in this contest.
- Awards as follows: trophy to first place winners; rosettes to fifth. A trophy will be awarded to the "over-all champion driver".
- Trophies and premiums awarded to those who have class listed on Pre-Entry Forms only.**
- Tractor driving contest procedures, rules, and scoring methods can be obtained online or from your local high school vocational agricultural instructor.

SECTION 1 - TRACTOR DRIVING

Class #	Description	Entry Fee
75001	Seniors – age 17-21	\$.50
75002	Intermediate – age 13-16	\$.50

DEPARTMENT 76 – YOUTH ORGANIZATIONS-Club Exhibits

ENTER UNDER CLUB NAME ONLY!

SECTION 01 - CLUB BOOTH

Fair Requirements

Club Booth Awards - Clubs that have a booth in the Foreman Building are eligible to enter. Booths will be judged on adherence to Fair theme, appearance, eye-catching arrangement & balance of projects, decorations, neatness and originality. Each booth will be judged daily throughout the week, with the winner announced Friday evening. .

Class #	Description	Project Sheet
76001	Club booth	No

SECTION 02 - CLUB EXHIBITS

1. Club promotional video must be turned in to the fair office by **5pm Monday** preceding fair.
2. Videos will be returned to the exhibitor during your interview with the judge.
3. Video production entries must be displayed with a Project Sheet in the booth.
Project Sheets are available at KCYF.org
4. Club banners and scarecrows must be in the booth with exhibit tag attached by **4pm on Monday** when judging will occur.

Class #	Description	Project Sheet
76002	Ball of Twine Contest - Each club will put together the largest ball of twine (must consist exclusively of twines taken off bales used during the week of Fair). All twine MUST be dry. Contest will be judged at 4:00 p.m. on Saturday ending Fair outside of Guest Services Office.	No
76003	Scarecrows - One entry per club. New entries must be submitted each year. Create a life-size scarecrow.	No
76004	Club Banners - Each club may enter a banner to be hung in your club booth. New entries are required each year and must have the year date (visible) on it. Banners should be 36" x 48" with a dowel through the top. No paper banners. The banner could show club projects, club activities, fair theme, etc.	No
76005	Shoebox Float Promoting Current Fair Theme - The float must be made from a cardboard shoe box. (not larger than 14" x 19") and should represent the current Kent County Youth Fair theme. Floats will be kept on display in the club booth during the Fair. Judging will be on float only. It should be displayed with a pulling conveyance for realism. Judged on originality, neatness, craftsmanship, use of materials, overall appearance and use of theme	No
76006	Shoebox Float Parade – Create a parade of floats within your booth.	No
76007	Club Promotional Video - Video must promote the Kent County Youth Fair. Video may be used by the Kent County Youth Fair to promote the fair. Commercial must be no longer than 3 minutes.	Yes
76008	Club Scrapbook/Photo Album - Scrapbook or photo album of club activities in the most recent year. May be added to each year.	No

EXHIBITOR YEAR CALENDAR

Exhibitor Fair Schedule please visit www.kcyf.org for the most recent updates

Date	Event	Time	Location
January			
2 nd Wed.	No Fair Board Meeting due to MAFE Convention		
February			
1	Dairy Market Steer Declarations Due	5 pm	Fair Office
1st Wed.	Exhibition Meeting	6:30pm	Fairway Gathering Place
2 nd Wed.	Fair Board Meeting	6:30 pm	Fairway Gathering Place
March			
1st Wed.	Exhibition Meeting	6:30pm	Fairway Gathering Place
2 nd Wed.	Fair Board Meeting	6:30 pm	Fairway Gathering Place
April			
1st Wed.	Exhibition Meeting	6:30pm	Fairway Gathering Place
2 nd Wed.	Fair Board Meeting	6:30 pm	Fairway Gathering Place
May			
1	Horse Declarations Due	5 pm	Horse Council
1	Dog Declarations Due	5 pm	Superintendent
1st Wed.	Exhibition Meeting	6:30pm	Fairway Gathering Place
2 nd Wed.	Fair Board Meeting	6:30 pm	Fairway Gathering Place
June			
2nd	Royal Court Applications Due	6:00pm	Fair Office
1st Wed.	Exhibition Meeting	6:30pm	Fairway Gathering Place
2 nd Wed.	Fair Board Meeting	6:30 pm	Fairway Gathering Place
15	All Fair Forms and Entries Due	Midnight	Fairentry
15	Still Exhibit Auction Participation Declared on Fairentry	midnight	Fairentry
20	Royal Court Interviews	5:30pm	TBD
30	Rabbit/Cavy Record Books Due	6:00pm	Fair Office
July			
1st	All entry fees must be paid		
1st Wed.	Exhibition Meeting	6:30pm	Fairway Gathering Place

2 nd Wed.	Fair Board Meeting	6:30 pm	Fairway Gathering Place
2nd Wed.	All Dog Record Books Due		
15	Absentee Still Exhibit Judging Forms Due	5 pm	Fair Office
11	Creative Writing & Video Production Projects Due	5pm	Fair Office
15	Last Day to cancel exhibits (see rules)	5 pm	
15	Poultry Exhibition Record Books Due (not market)	5 pm	Fair Office
17	Dog Project Meeting (third thursday in July)	7pm	King Building
19	Royal Court Orientation	10am to 2pm	TBD
July - August Fair Schedule posted on the website at KCYF.org			
September			
1st Wed.	Exhibition Meeting		
2 nd Wed.	Fair Board Meeting	6:30 pm	Fairway Gathering Place
October			
1	Kent County Youth Fair Membership Dues Due	5 pm	Fair Office
1st Wed.	Exhibition Meeting	6:30pm	Fairway Gathering Place
2 nd Wed.	Fair Board Meeting	6:30 pm	Fairway Gathering Place
31	All Premium & Sale Checks must be cashed		
November			
1 st Wed.	Annual Meeting of the Fair Board	6:30 pm	Fairway Gathering Place
to be announced	Declaration, DNA Collection & Weigh in of Beef Market Steers/Heifers	9a-3p	TBA
2 nd Wed.	Fair Board Meeting	6:30 pm	Fairway Gathering Place
December			
1st Wed.	Exhibition Meeting	6:30pm	Fairway Gathering Place
2 nd Wed.	Fair Board Meeting	6:30 pm	Fairway Gathering Place
Michigan Winter Beef Show	Declaration, DNA Collection & Weigh in of Beef Market Steers/Heifers	9a-3p	Michigan Winter Beef Show at MSU

FAIR WEEK SCHEDULE

Time	Department	Event	Location
Week of Fair		Fair Youth Citizenship Judging by appointment	TBD
Friday			
9 AM to 10 PM	Still Exhibits	Club Booth Set-up	Still Exhibit Area
10:00 AM	Dog	Dog Showmanship & Obedience	@ Cedar Rock Sports Complex
5 to 8 PM	Swine	Swine Check In	east end of swine barn
Saturday			
7 AM to noon	Swine	Swine Check In	Swine Barn
9 AM to 10 PM	Still Exhibits	Club Booth Set-up	Still Exhibit Booth Area
10 AM to 3PM	Still Exhibits	Still Exhibit Judging	Still Exhibit Judging Area
10 AM to 12 PM	Performing Arts	National Anthem Performance Judging with performances throughout the fair week	TBD
10AM to 1PM & 2PM to 5PM	Poultry	Pullorum Testing, Health Evaluation & Weigh In of Poultry	Small Animal Barn north end
3:00 PM	Still Exhibits	Modeling Narration Cards Due	Sewing Judges Table
5:00 PM	Still Exhibits	Still Exhibit Auction registration due	Exhibition Office
5 to 7 PM	Beef	Beef Cattle – RFID check	Cattle Barn
6 to 7 PM	Sheep	Sheep Check In	Sheep Tent
Sunday			
8 AM to 6 PM	Horse	Horse Check In	Horse Arena
9 AM to 10 PM	Still Exhibits	Club Booth Set-up	Still Exhibit Booth Area
10AM to 12PM	Beef	Heifer and Feeder Check-in	Cattle Barn
10AM to 2PM	Beef	Steer Check-in, Weigh In and Ultrasound (Must Be on grounds by 2pm)	Cattle Barn
1 to 4 PM	Rabbit / Cavy	Rabbit & Cavy Check In – Market Rabbit Record Books Due	Small Animal Barn
2 PM to 4 PM	Sheep	Sheep Check In	Sheep Tent
2:00 to 5PM	Poultry	Check in	north end of barn
2 to 6 PM	Goat	Goat Check In	Goat Tent
2 to 6 PM	Goat	Goat Record Book and Other Records Due	Goat Tent
3:00 PM	Swine	Swine Market Pictures	TBD
5:00 PM	Sheep	Weigh In & Screening of Market Sheep	TBD
following Sheep Weigh In	Goat	Market Goat Weigh In & Tagging	Goat Tent
6:00 PM	Dairy	Dairy & Dairy Market Exhibitors Meeting	Cattle Barn
6:30 PM	Dairy	Dairy Market Weigh In	Cattle Barn
7:00 PM	Royal Court	Opening Ceremony and Royal Court Coronation	Performing Arts Tent
7:30 PM	Goat	Goat Team Fitting followed by Goat Exhibitor Meeting	TBD

9:00 PM		All Drops to Auctions Must be Declared (see fair book)	
Monday			
8:00 AM	Swine	Swine Judging – Market, Showmanship & Explorers, Champion Drive	Show Pavillion
9:00 AM	Horse	Horse Judging – Showmanship, Saddle Seat, Jumping	Horse Arena
10:00 AM	Poultry/Rabbit	Market Pictures	north end of barn
11:00 AM	Cavy	Cavy Showmanship and Breed	Cavy Area
Noon	Still Exhibits	All exhibits and booths must be in and complete by noon	Still Exhibit Area
Noon	Rabbit	Rabbit Showmanship followed by Breed and Market	Rabbit Show Area
Noon	Sheep	Market Sheep Record Books Due	Sheep Tent
4:00 PM	Still Exhibit	Club Booth & Scarecrow Judging	Still Exhibit Area
4:00 PM	Dog	Dog Agility Registration followed by Agility Judging	TBD
6:00 PM	Poultry	Poultry Market Judging & Market Record Books Due	East side of Barn
6:00 PM	Beef	Market Beef Record Books Due	TBD
6:00 PM	Dairy	Dairy Market Record Books Due	TBD
7:00 PM	Dairy	Dairy Sweepstakes Showmanship	Show Pavillion
Tuesday			
9:00 AM	Goat	Goat Showmanship – Breed/Market Classes to Follow	Show Pavillion
9:00 AM	Horse	Saddle Seat Patterns, Hunt Seat, Bareback Equitation, Versatility, Cloverleaf & Flag Race	Horse Arena
	Horse	Horse Versatility	Horse Arena
Noon	Goat	Goat Project Record Books Due Market	Goat Tent
4:00 PM	Sheep	Sheep Show – Breeding Stock, Club Lambs, Tots & Tykes, Explorer, Showmanship	Show Pavillion
4:00 PM	Horse	Explorer Stick Horse Construction - and Parade	Horse Arena
5:00 PM	Rabbit / Cavy	Rabbit/Cavy Quiz Bowl	Rabbit Show Area
Wednesday			
8:00 AM	Beef	Beef Steer Judging – Showmanship & Explorer Classes, Feeder Steers, Breeding Classes,	Show Pavillion
8:00 AM	Horse	Western Dressage, Dressage Seat Equitation, Mini Timed Events, Down & Back, Barrel & Pole Bending' Explorers during the show.	Horse Arena
8:30 AM	Poultry	Poultry Showmanship, Breed and Dozen Eggs Judging	Poultry Show Tent
2:00 PM	Dairy	Dairy Market Judging – Market, Showmanship, Explorer	Show Pavillion
Thursday			
9:00 AM	Horse	Walk Trot Riding Pattern, Western Equitation & Pleasure, Gymkhana Equitation	Horse Arena
9:00 AM	Livestock Auction; Goat, Sheep, Beef, Dairy, Swine		Show Pavilion

11:00 AM	Rabbit / Cavy	Rabbit & Cavy Explorer Classes & Fun Classes – Explorer Record Books Due	Small Animal Barn
1:00 PM	Rabbit/Cavy	Costume Classes	Rabbit Show Area
1:30 PM	Performing Arts	Performing Arts – Vocal and Instrumental. registration	Performing Arts Tent
2:00 PM	Performing Arts	Performing Arts – Vocal and Instrumental.	Performing Arts Tent
3:00 PM	Goat	Goat Costume and Trail classes	TBD
6:30 PM	Horse	Grand & Reserve Equitation	Horse Arena
7:00 PM	Goat	Cup Cup Tournament !	
Friday			
7:30 AM	Performing Arts	Public Speaking, Demo,Broadcasting, Modeling registration	Performing Arts Tent
8:00 AM	Performing Arts	Public Speaking, Demo,Broadcasting, Modeling	Performing Arts Tent
9:00 AM	Horse	Ranch Trail, In Hand Trail, Ranch Pattern & Pleasure, Team Performances, Speed & Action, Keyhole	Horse Arena
9:00 AM	Goat	Milking Contest	Goat Tent
10:00 AM	Dairy	Dairy Judging – Showmanship, Breed, Explorer	Show Pavilion
10:00 AM	Rabbit	Rabbit Agility	Rabbit Show Area
Noon	Horse	Explorer Stick Horse Trail	Horse Arena
12:30 PM	Performing Arts	Theatre, Clowning, Misc. check-in	Performing Arts Tent
1:00 PM	Performing Arts	Theatre, Clowning, Misc.	Performing Arts Tent
2:30 PM	Still Exhibit	Tractor Driving Judging	Track
3:30 PM	Performing Arts	Dance check-in	Performing Arts Tent
4:00 PM	Performing Arts	Dance judging	Performing Arts Tent
5:00 PM		Small Animal Auction -Poultry, Rabbit, Still Exhibits	
5:00 PM	Dog	Dog Showmanship Clinic	TBD
Saturday			
8:30 AM	ALL Livestock	Showmanship Sweepstakes	Show Pavilion
9:00 AM	Horse	Horse Costume, Pairs & Pro-Am	Horse Arena
2:00 PM	Horse	Horse Awards Ceremony	TBD
3:00 PM		Pedal Pull	South side of Grain Bin
4:00 PM	Still Exhibit	Ball of Twine Judging	Exhibition Office
5:00 PM	Still Exhibit	Release of Still Exhibits	
5:00 PM	Horse	Release of Horses	
6:00 PM	Market Animals	Release of Processed Market Animals may begin at 6:00PM	
6:00 PM	Dairy / Beef	Release of Dairy & Beef Cattle	
7:00 PM	Rabbits / Cavy / Sheep / Swine / Goats	Release of Rabbits/Cavy, Sheep, Swine, & Goats	
8:00 PM	Poultry	Release of Poultry	

2024 Royal Court

Queen: Sarah Harper

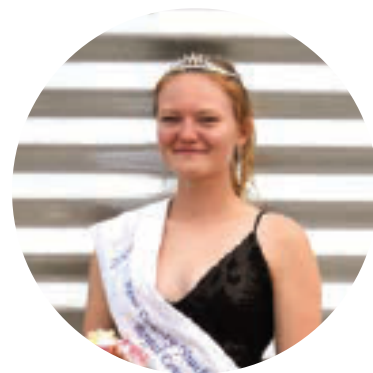


Hello, my name is Sarah Harper! I am 17 years old and currently a senior at Lowell High School. I'm part of the Working Paws club and show both my dog and cavy. My hobbies include reading, hiking, theater, photography, art, anything fashion-related, singing, and showing my dog. Besides showing my animals my favorite part of the fair is the supportive community. Everyone comes together to help one another succeed, and it's one of the things I look forward to every year. I'm extremely excited to be on the court to share my fair experience with others and answer questions from little kids, along with volunteering around Kent County and finding new ways to help improve the royal court!

Court: Johanna Bailey

Hi I'm Johanna Bailey and I'm 20 years old. I am in my second year of college at GRCC in the environmental science and sustainability transfer program. Some of the things I enjoy doing are swing dancing, line dancing, reading, and playing cards.

My club is Savage Faith and my favorite part of fair is The horse superintendent, Travis. With working, school and helping my grandparents with medical issues, Travis has worked really hard to make fair a possibility for me this year. This part of my year is something I need in my life and Travis has shown such kindness, generosity when I really needed help. For that I am so grateful and that is what is the best part of fair for me this year. Being on the royal court I am excited to volunteer and do things to better our community. Plus getting dressed up is fun too.



Jr. Queen: Maura Davis



Hi my name is Maura Davis and I am 14 years old! I am a homeschooler going into the 9th grade and some of my hobbies are riding horses, skiing, hunting, and riding quads. I am part of Showcase Riders to show horses and County Line to show dairy feeders. My favorite part of fair is being around my friends and the people in my clubs. We always encourage each other and help each other learn. I also love having the opportunity to show different animals. I am most excited to be on the royal court to meet new people and to promote the fair and the beautiful new fairgrounds.



Jr. King: Gideon Boening

Hi, my name is Gideon Boening and I am 14 years old. I am homeschooled and currently in 9th grade going into 10th. My hobbies include baseball, fishing, and dirt bikes. My favorite part of the fair is being able to make new friends and see all the animals. I'm looking forward to being on the Royal Court so that I can help expand the fair and hopefully get more people to join.



Jr. Court: Mazie Huizenga

Hi my name is Mazie Huizenga and I am 15 years old. I am a homeschooler in the 10th grade and I enjoy Singing, playing volleyball, calligraphy/hand lettering, and organizing. I am part of the fair club Cherry Valley Livestock where I show my pigs and lambs. My favorite part of the fair is meeting new people and socializing and I'm excited to be on the court to build even more friendships and also to learn new responsibilities.



Jr. Court: Keeley Boyd

Hi, my name is Keeley Boyd and I am 13 years old. I am homeschooled and currently in 7th grade going into 8th. I have lots of hobbies including singing, playing the ukelele, hanging out with friends, hanging out with animals and showing animals. I am part of the Alto Active Achievers club where I show Cavies, Goats, Rabbits, and Chickens. I love everything about the fair which is why I'm excited to be on the Royal Court this year to help promote the fair, along with being able to make new friends and help others.



Jr. Court: Amelia Veltman



Hi I'm Amelia Veltman and I am 13 years old. I am an 8th grader at EPIC Homeschool Academy and my hobbies include drawing, reading and writing books, making clay things, and art. At fair I show pigs, chickens, and rabbits in my club Byron Center Busy Workers. My favorite parts of fair are the days that I get to show and auction days. I am excited to be on court to build friendships and improve my people skills. Something fun about me is that I love anything that has to do with words. I won the Write Michigan Short Story Contest and a spelling bee I participated in a couple months ago.

Princess: Maggie Veltman

Hi I'm Maggie Veltman! I'm 11 years old and a homeschooler going into the 5th grade. I love to dance, sing, do crafts, and talk with my friends. I am part of Byron Center Busy Workers where I show pigs, chickens, rabbits, and still exhibits. My favorite part of fair is showing my chicken and seeing fair friends and having friends from my homeschool co-op visit me at fair. I'm most excited to be in parades with the royal court and see all of the smiling kids faces.



Princess Court: Myla Davis



Hi my name is Myla Davis! I am 11 years old and I am homeschooled and attend Epic Homeschool Academy where I am going into the 6th grade. My hobbies include riding horses, snow skiing, woodworking, riding 4-wheelers, and reading. I am apart of Showcase Riders for horses and County Line for dairy feeders. My favorite part of the fair is being with my friends and showing my animals.

